

Timmins West

As referenced in the news release dated December 9, 2024

Drill Hole Collar Table	Pages 1 - 2
Drill Hole Assay Composite Table.....	Pages 2 - 5
Cross Section and Plans.....	Pages 6 - 14

Timmins West Collars:

Hole No.	Zone	UTM E	UTM N	Elevation (masl)	Az (°)	Incl. (°)	Total length (m)
TW23-748	Broulan Reef	487,219	5,373,015	292	335	-64	306
TW23-749	Broulan Reef	487,140	5,373,089	294	335	-58	111
TW23-750	Hallnor	489,414	5,374,075	295	159	-59	600
TW23-751	Hallnor	489,414	5,374,075	295	158	-53	504
TW23-752A	Hallnor	489,414	5,374,075	295	159	-57	600
TW23-753	Hallnor	489,355	5,374,104	292	156	-54	510
TW23-754	Hallnor	489,355	5,374,104	292	158	-49	601
TW23-755	Hallnor	489,366	5,373,993	295	155	-64	550
TW23-756	Hallnor	489,366	5,373,993	295	150	-66	550
TW23-757C	Hallnor	489,172	5,373,963	292	155	-61	576
TW24-758	Hallnor	489,172	5,373,963	292	149	-59	485
TW24-759A	Hallnor	489,172	5,373,963	292	165	-60	576
TW24-760A	Hallnor	489,468	5,373,491	294	332	-62	564
TW24-761	Hallnor	489,346	5,373,681	293	333	-45	76
TW24-762	Hallnor	489,355	5,373,663	292	333	-50	97
TW24-763	Hallnor	489,380	5,373,657	293	333	-50	127
TW24-764	Hallnor	489,370	5,373,677	292	333	-45	91
TW24-765	Hallnor	489,162	5,373,535	287	333	-45	202
TW24-766	Hallnor	489,135	5,373,550	287	333	-45	172
TW24-767	Bonetal	488,707	5,373,514	284	153	-50	250
TW24-768	Bonetal	488,668	5,373,525	281	152	-48	250
TW24-769	Hallnor	488,891	5,373,425	285	333	-46	150
TW24-770	Hallnor	488,902	5,373,401	285	333	-46	181
TW24-771	Hallnor	488,868	5,373,381	285	333	-50	187
TW24-772	Bonetal	488,862	5,373,369	285	333	-47	175
TW24-773	Bonetal	488,847	5,373,380	286	333	-45	151
TW24-774	Bonetal	488,877	5,373,341	285	333	-50	241
TW24-775	Bonetal	488,877	5,373,340	285	333	-58	301
TW24-776	Bonetal	488,840	5,373,370	285	335	-50	142
TW24-777	Bonetal	488,840	5,373,369	285	335	-60	160
TW24-778	Bonetal	488,833	5,373,361	285	333	-54	202
TW24-779	Bonetal	488,828	5,373,370	285	333	-45	151
TW24-780	Bonetal	488,857	5,373,331	285	333	-57	231
TW24-781	Bonetal	488,825	5,373,333	284	333	-45	202
TW24-782	Bonetal	488,731	5,373,305	282	333	-45	222
TW24-783	Bonetal	488,689	5,373,318	280	333	-45	250
TW24-784	Broulan Reef	487,219	5,373,014	292	333	-57	250
TW24-785	Broulan Reef	487,205	5,373,042	292	332	-51	136
TW24-786	Broulan Reef	487,205	5,373,042	292	330	-56	207
TW24-787	Broulan Reef	487,196	5,373,017	292	332	-48	231

Hole No.	Zone	UTM E	UTM N	Elevation (masl)	Az (°)	Incl. (°)	Total length (m)
TW24-788	Broulan Reef	487,195	5,373,017	292	332	-54	246
TW24-789	Broulan Reef	487,196	5,373,017	292	332	-60	252
TW24-790	Broulan Reef	487,142	5,373,034	292	333	-45	186
TW24-791	Broulan Reef	487,142	5,373,034	292	333	-54	201
TW24-792	Broulan Reef	487,142	5,373,033	292	333	-62	252
TW24-793	Broulan Reef	487,279	5,373,001	291	333	-48	252
TW24-794	Broulan Reef	487,279	5,373,001	291	333	-54	300
TW24-795	Broulan Reef	487,280	5,373,001	291	333	-58	339
TW24-796	Broulan Reef	487,265	5,372,987	291	332	-46	300
TW24-797	Broulan Reef	487,265	5,372,987	291	331	-54	375
TW24-798	Broulan Reef	486,939	5,372,980	293	333	-45	201
TW24-799	Broulan Reef	486,939	5,372,980	293	333	-56	210
TW24-800	Broulan Reef	486,939	5,372,979	293	333	-66	231
TW24-801	Broulan Reef	487,025	5,373,051	293	333	-45	162
TW24-802	Broulan Reef	487,025	5,373,051	292	333	-57	171
TW24-803	Broulan Reef	486,965	5,372,989	293	333	-45	141
TW24-804	Broulan Reef	486,965	5,372,989	293	333	-54	201
TW24-805	Broulan Reef	486,966	5,372,989	293	333	-63	231
TW24-806	Broulan Reef	486,982	5,373,046	293	333	-53	177
TW24-807	Broulan Reef	487,047	5,373,008	293	333	-52	222
TW24-808	Broulan Reef	487,047	5,373,008	293	333	-63	231
TW24-809	Broulan Reef	487,033	5,373,081	292	333	-56	144
TW24-810	Broulan Reef	487,022	5,373,104	292	333	-56	102
TW24-811	Broulan Reef	487,043	5,373,060	292	333	-66	147
TW24-812A	Broulan Reef	487,132	5,373,062	292	333	-45	99

Timmins West Drill Hole Assay Composite Table:

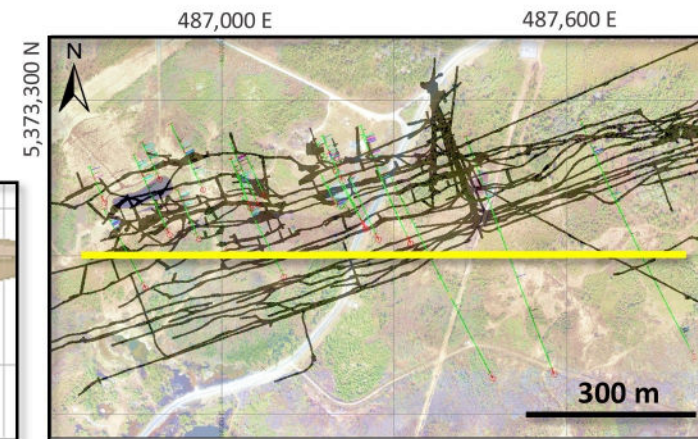
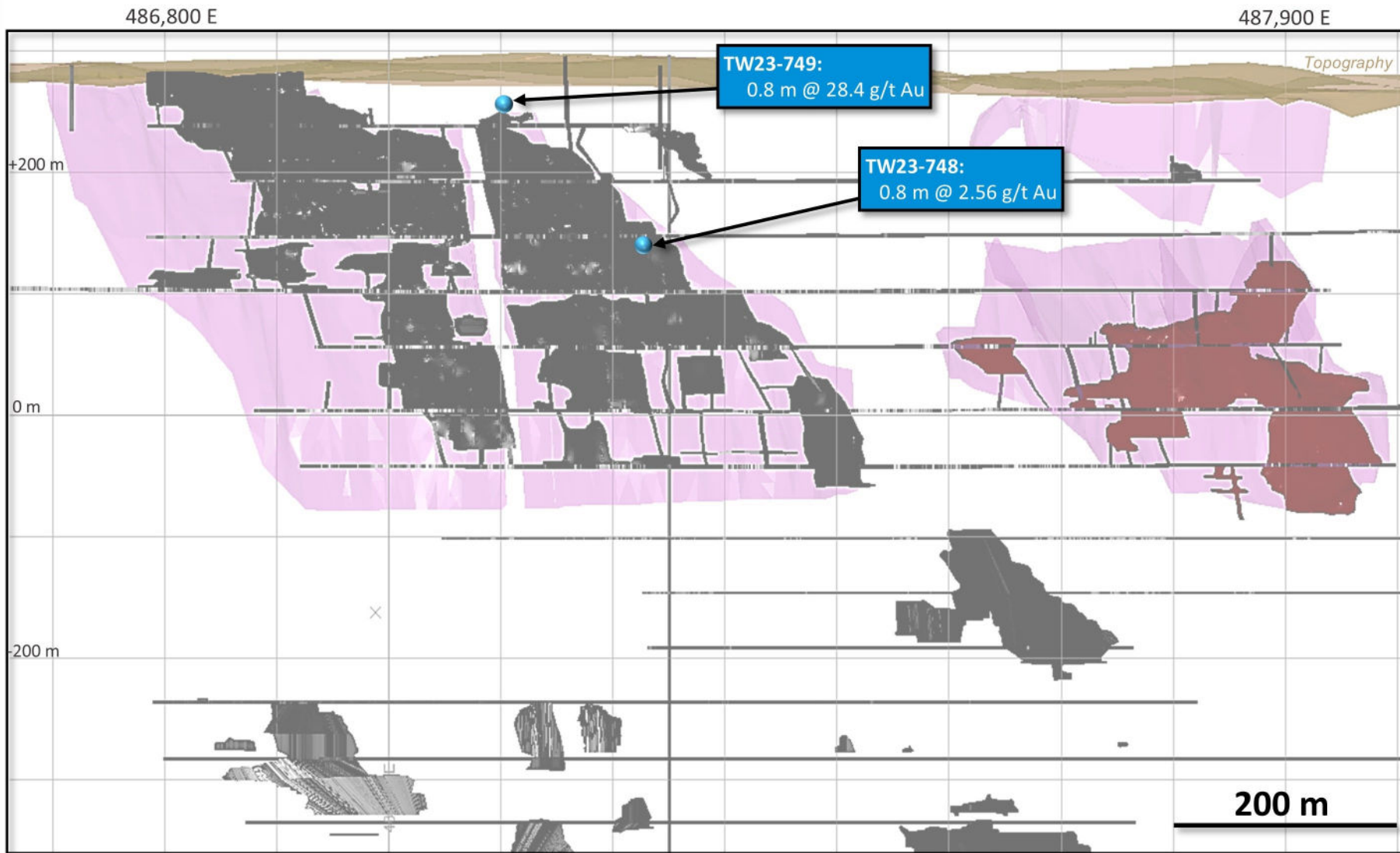
Hole No.	Zone	From (m)	To (m)	Int. (m)	Est. True Width (m)	Au g/t
TW23-748	Broulan Reef	233.0	234.0	1.0	0.8	2.56
TW23-749	Broulan Reef	61.0	62.0	1.0	0.8	28.40
TW23-750	Hallnor Incl.	444.2	462.0	17.8	11.7	3.28
		454.0	461.0	7.0	4.5	5.98
		491.0	498.0	7.0	4.4	4.32
TW23-751	Hallnor Incl.	378.0	379.0	1.0	0.7	6.79
		411.2	430.0	18.8	13.7	2.11
		415.0	425.0	10.0	7.3	3.27
		492.0	493.0	1.0	0.7	3.59
TW23-752A	Hallnor	436.8	442.0	5.2	3.5	2.71
		449.0	463.8	14.8	10.1	1.41
		485.0	488.0	3.0	2.0	3.37
		505.0	506.0	1.0	0.7	7.11
TW23-753	Hallnor	452.0	453.0	1.0	0.7	3.49
		490.0	496.0	6.0	4.3	3.72
		505.0	507.5	2.5	1.8	4.08
TW23-754	Hallnor	405.0	409.0	4.0	3.1	2.54
		448.0	455.0	7.0	5.4	2.50
		490.0	495.0	5.0	3.9	2.07
		548.0	561.0	13.0	10.1	3.33
TW23-755	Hallnor Incl.	382.0	446.0	64.0	37.5	1.40
		439.0	446.0	7.0	4.1	3.82

Hole No.	Zone	From (m)	To (m)	Int. (m)	Est. True Width (m)	Au g/t
		529.0	532.0	3.0	1.8	2.17
TW23-756	Hallnor Incl.	299.0	300.0	1.0	0.6	8.20
		319.0	320.0	1.0	0.6	65.30
		408.5	428.0	19.5	10.8	2.91
		409.0	415.0	6.0	3.3	6.07
		479.3	482.0	2.7	1.5	3.05
TW23-757C	Hallnor	438.0	444.3	6.3	4.0	4.20
TW24-758	Hallnor	436.0	437.0	1.0	0.6	4.99
		472.7	476.9	4.2	2.7	19.89
TW24-759A	Hallnor Incl.	423.0	424.0	1.0	0.6	3.89
		500.0	508.0	8.0	5.1	5.15
		504.0	505.0	1.0	0.6	21.80
		530.0	533.0	3.0	1.9	6.93
TW24-760A	Hallnor	405.6	407	1.4	0.9	9.05
		452	453	1	0.6	8.63
		462	468	6	3.5	3.40
TW24-761	Hallnor	35.0	38.0	3.0	2.4	5.19
TW24-762	Hallnor	69.0	74.0	5.0	3.8	2.36
TW24-763	Hallnor	88.0	89.0	1.0	0.8	3.58
TW24-764	Hallnor	NSV				
TW24-765	Hallnor	118.0	119.0	1.0	0.8	58.20
TW24-766	Hallnor	129.0	134.0	5.0	4.1	3.51
		145.0	147.0	2.0	1.6	6.39
		158.0	159.0	1.0	0.8	9.93
TW24-767	Bonetal	149.0	153.0	4.0	3.0	1.99
TW24-768	Bonetal	39.0	40.0	1.0	0.8	6.91
		107.0	108.0	1.0	0.8	3.02
		161.0	168.0	7.0	5.5	3.50
TW24-769	Hallnor	75.0	84.2	9.2	7.4	0.68
		93.0	103.0	10.0	8.0	0.86
TW24-770	Hallnor Incl. also incl.	90.0	91.0	1.0	0.8	5.77
		99.0	117.0	18.0	14.5	3.42
		99.0	110.0	11.0	8.8	4.58
		99.7	102.0	2.3	1.8	14.40
TW24-771	Hallnor Incl.	120.5	130.0	9.5	7.2	31.50
		122.0	123.0	1.0	0.8	284.00
TW24-772	Bonetal	120.0	121.0	1.0	0.8	3.16
		132.0	133.0	1.0	0.8	71.40
TW24-773	Bonetal	75.0	76.0	1.0	0.8	4.63
TW24-774	Bonetal	154.0	157.0	3.0	2.3	5.32
TW24-775	Bonetal	162.0	164.0	2.0	1.5	4.05
		204.0	208.0	4.0	3.0	4.11
TW24-776	Bonetal	110.0	112.0	2.0	1.5	21.75
		116.0	117.0	1.0	0.8	17.70
		127.7	128.7	1.0	0.8	6.29
TW24-777	Bonetal	127.0	129.0	2.0	1.5	5.68
TW24-778	Bonetal	111.1	112.0	0.9	0.7	2.26
		123.0	124.0	1.0	0.8	2.71
		149.0	156.0	7.0	5.3	3.22
TW24-779	Bonetal	92.0	93.0	1.0	0.8	1.63
		106.0	107.0	1.0	0.8	1.14
TW24-780	Bonetal	193.0	194.0	1.0	0.8	67.80
TW24-781	Bonetal	118.0	119.0	1.0	0.8	3.74
		120.3	126.0	5.7	4.3	3.26

Hole No.	Zone	From (m)	To (m)	Int. (m)	Est. True Width (m)	Au g/t
		144.0	145.0	1.0	0.8	15.90
		159.0	160.0	1.0	0.8	6.53
TW24-782	Bonetal	125.0	140.0	15.0	11.4	3.78
		179.0	190.0	11.0	8.4	0.98
		208.0	212.0	4.0	3.0	4.28
		218.0	221.0	3.0	2.3	1.46
TW24-783	Bonetal	27.0	32.0	5.0	4.1	1.96
		115.0	127.0	12.0	9.8	2.74
		139.0	152.0	13.0	10.6	3.37
		218.0	219.0	1.0	0.8	6.36
		228.0	229.0	1.0	0.8	8.21
TW24-784	Broulan Reef	178.2	181.0	2.8	1.9	1.26
		208.0	214.0	6.0	4.1	1.10
		241.0	242.0	1.0	0.7	1.33
TW24-785	Broulan Reef	127.5	136.0	8.5	6.4	0.70
TW24-786	Broulan Reef	131.1	131.6	0.5	0.3	11.60
		138.2	143.7	5.5	3.8	3.99
		Incl. 142.7	143.2	0.5	0.3	38.60
		169.5	180.5	11.0	7.6	6.26
		Incl. 175.0	176.0	1.0	0.7	11.80
		also incl. 178.6	179.1	0.5	0.3	86.30
		193.5	198.1	4.6	3.2	6.04
		Incl. 193.5	194.0	0.5	0.3	20.20
		also incl. 197.6	198.1	0.5	0.3	35.10
TW24-787	Broulan Reef	144.0	144.5	0.5	0.4	1.57
		188.5	196.9	8.4	6.6	0.71
TW24-788	Broulan Reef	166.7	170.5	3.8	2.8	0.94
		189.0	190.0	1.0	0.7	5.99
TW24-789	Broulan Reef	137.7	142.3	4.6	3.0	3.13
		172.1	177.5	5.4	3.5	0.75
TW24-790	Broulan Reef	119.0	123.5	4.5	3.8	0.83
		131.4	133.7	2.3	1.9	1.51
TW24-791	Broulan Reef	120.0	124.6	4.6	3.3	1.37
		143.2	145.2	2.0	1.4	3.45
		Incl. 144.7	145.2	0.5	0.4	11.60
		158.8	161.2	2.4	1.7	1.41
TW24-792	Broulan Reef	139.5	144.0	4.5	2.8	1.74
		Incl. 143.5	144.0	0.5	0.3	13.50
		162.5	165.5	3.0	1.8	2.41
		Incl. 162.9	163.3	0.4	0.2	16.20
		172.0	179.2	7.2	4.4	0.95
195.6	198.0	2.4	1.5	1.64		
TW24-793	Broulan Reef	197.1	200.0	2.9	2.4	360.18
		Incl. 197.6	198.1	0.5	0.4	1940.00
		also incl. 198.1	198.5	0.4	0.3	140.00
		also incl. 198.5	199.0	0.5	0.4	31.40
TW24-794	Broulan Reef	214.8	217.3	2.5	1.8	0.86
TW24-795	Broulan Reef	215.0	222.0	7.0	5.0	0.62
		252.0	253.0	1.0	0.7	9.93
TW24-796	Broulan Reef	200.9	201.4	0.5	0.4	23.40
		216.7	217.5	0.8	0.7	5.84
TW24-797	Broulan Reef	215.8	216.8	1.0	0.7	1.76
		298.3	298.8	0.5	0.4	1.73
TW24-798	Broulan Reef	145.7	146.2	0.5	0.4	8.03
		154.3	154.8	0.5	0.4	6.08

Hole No.	Zone	From (m)	To (m)	Int. (m)	Est. True Width (m)	Au g/t
TW24-799	Broulan Reef	110.4	111.0	0.6	0.4	2.53
		149.9	156.2	6.3	4.5	0.55
TW24-800	Broulan Reef	167.5	171.2	3.7	2.3	2.17
		175.0	176.0	1.0	0.6	6.97
TW24-801	Broulan Reef Incl.	70.0	78.7	8.7	7.3	1.04
		118.7	127.1	8.4	7.0	2.42
		126.0	126.5	0.5	0.4	20.20
		132.1	133.3	1.2	1.0	3.15
TW24-802	Broulan Reef	102.0	104.0	2.0	1.4	2.54
		110.6	111.2	0.6	0.4	7.86
		116.8	117.2	0.4	0.3	378.00
TW24-803	Broulan Reef	104.5	105.3	0.8	0.7	0.70
TW24-804	Broulan Reef Incl.	138.5	144.3	5.8	4.3	4.69
		140.5	141.0	0.5	0.4	41.20
		154.9	155.4	0.5	0.4	6.24
TW24-805	Broulan Reef	157.3	159.9	2.6	1.6	3.46
TW24-806	Broulan Reef	64.1	66.0	1.9	1.4	1.11
		115.8	116.3	0.5	0.4	46.20
TW24-807	Broulan Reef	130.8	131.3	0.5	0.4	14.10
		156.7	158.0	1.3	1.0	6.57
TW24-808	Broulan Reef	151.4	152.0	0.6	0.4	15.10
		161.3	163.3	2.0	1.2	5.46
		168.9	169.5	0.6	0.4	16.20
TW24-809	Broulan Reef	104.0	111.0	7.0	5.0	1.87
TW24-810	Broulan Reef	NSV				
TW24-811	Broulan Reef	97.7	98.2	0.5	0.3	6.52
		131.6	132.2	0.6	0.4	8.15
TW24-812A	Broulan Reef	123.6	126	2.4	2.0	2.40

Whitney: Broulan Reef - Longitudinal Section (Looking North)

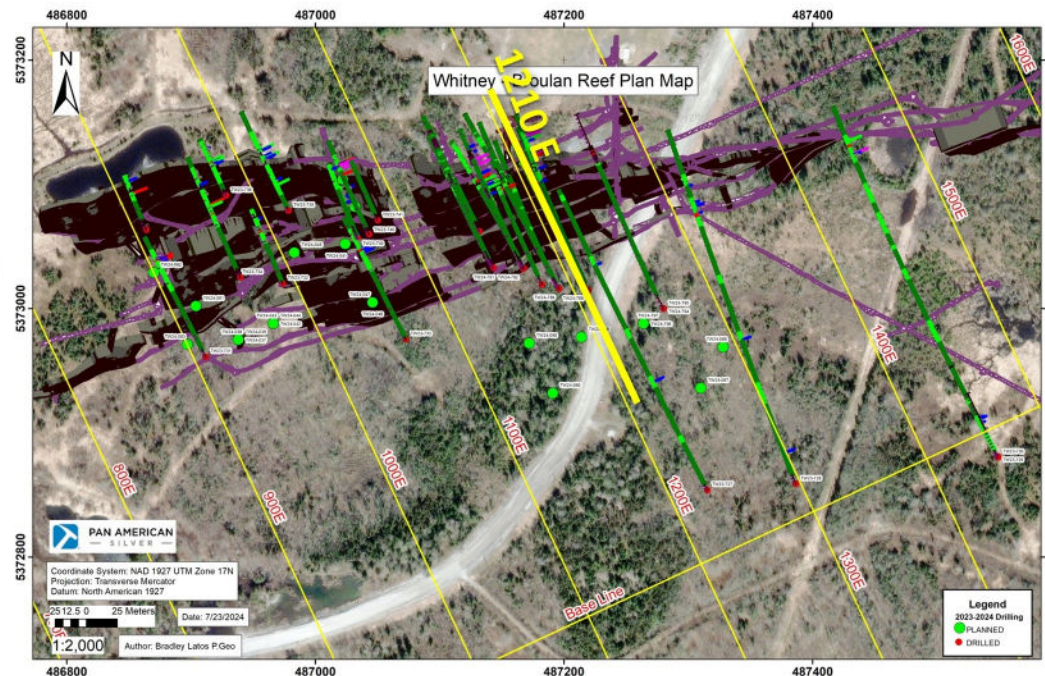
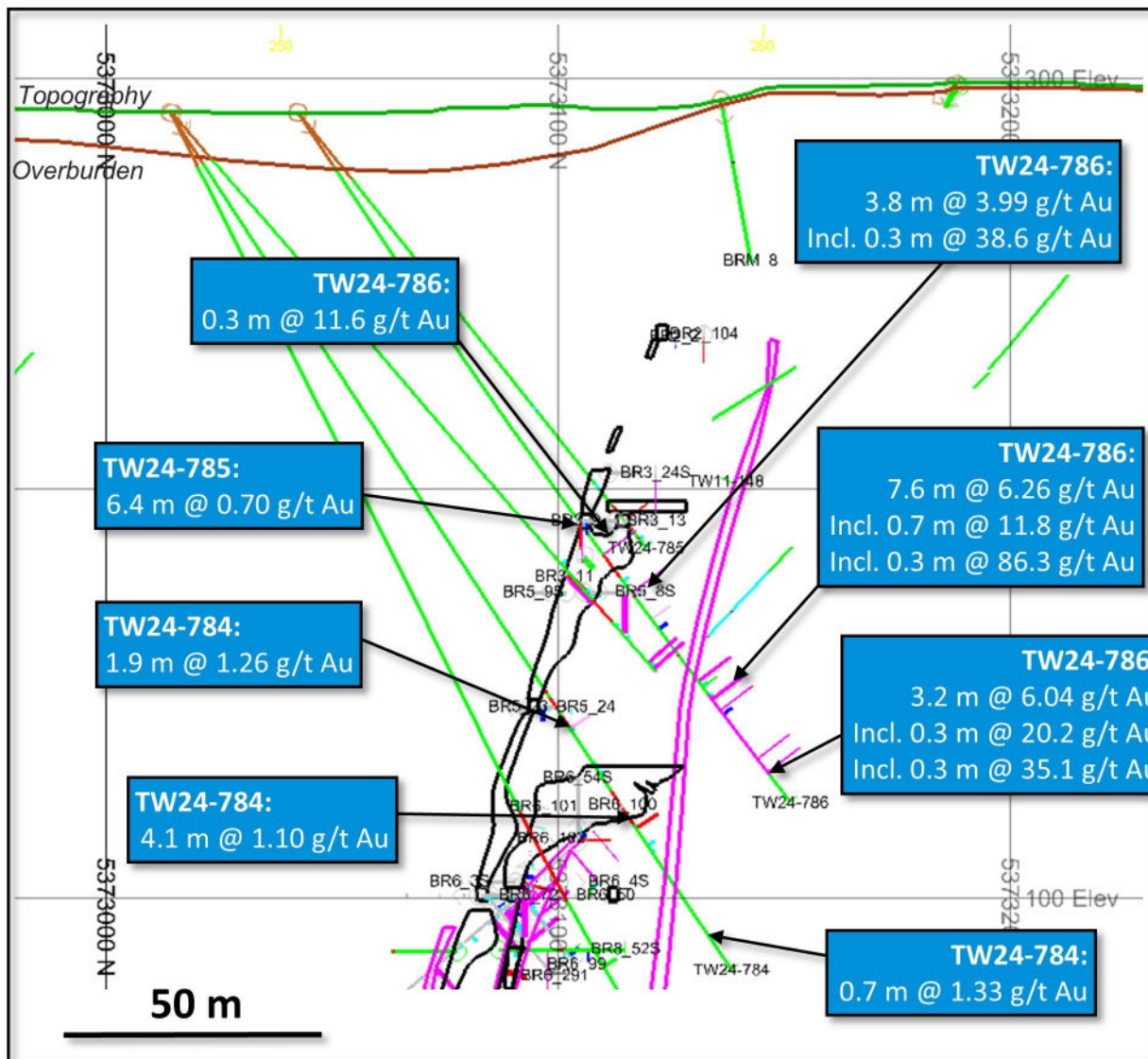


- Q4 2023 Drill Intercepts**
Drill Estimated True Widths (m) with Gold (g/t)
- Historic Underground Voids**
- Historic Resource Shapes**

Whitney: Broulan Reef - Cross Section

(Looking West +/- 10m)

1210E – Drill Hole TW24-784, 785, 786



2024 Drill Intercepts

Drill Estimated True Widths (m) with Gold (g/t)

Historic Underground Voids
Drill Hole Traces
Section Line

Underground Stopes, Levels, and Voids

Mineralized Domains

Gold Assays

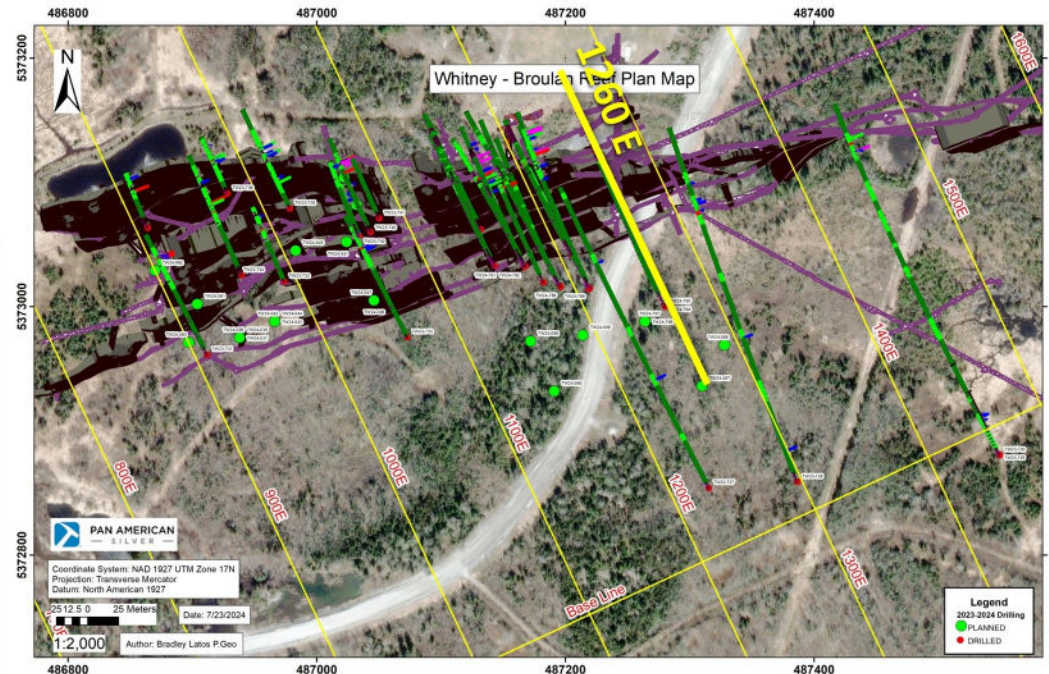
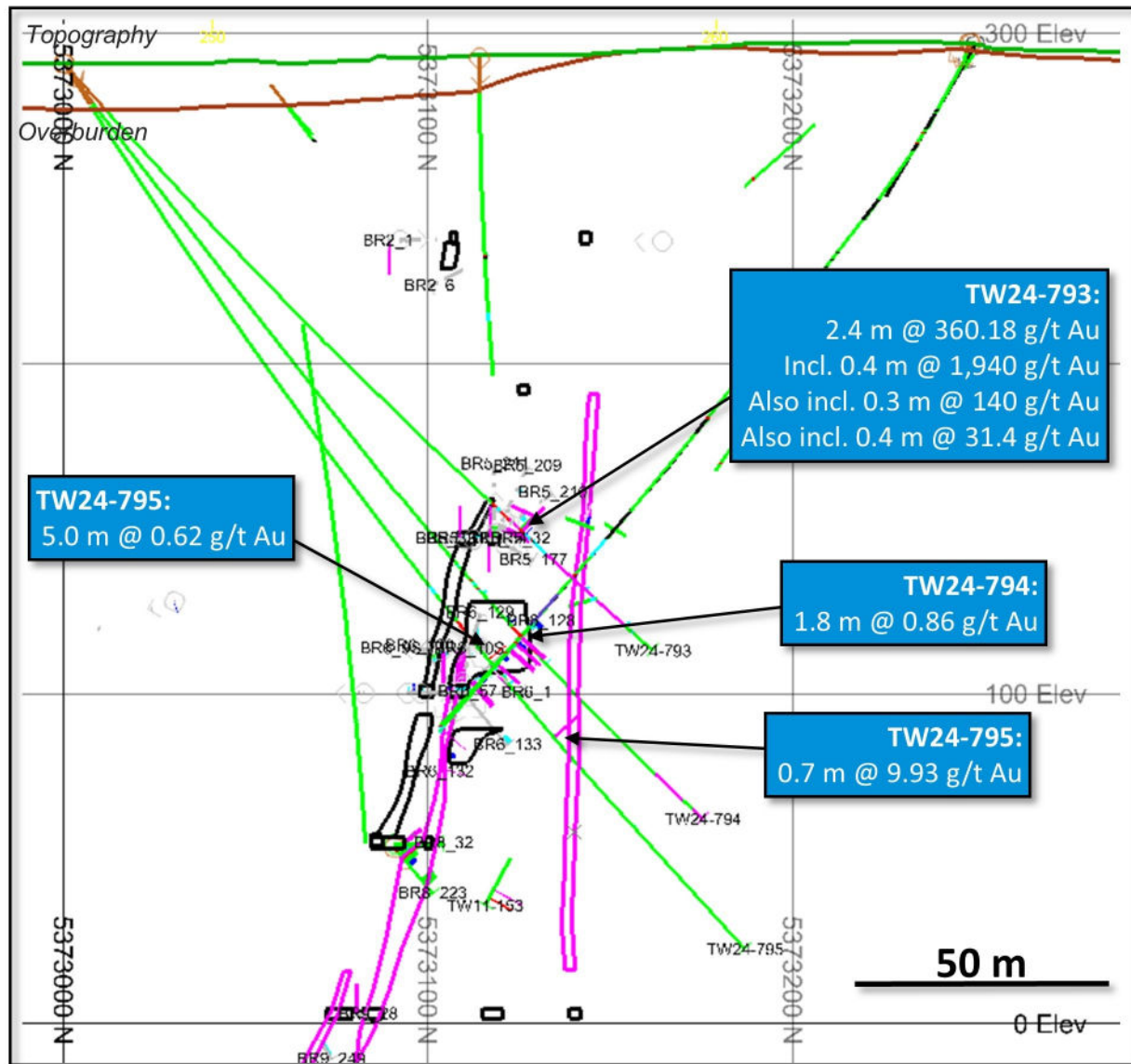
- > 6.0 g/t
- 4.5 – 6.0 g/t
- 3.5 – 4.5 g/t
- 2.5 – 3.5 g/t
- 1.5 – 2.5 g/t
- 0.5 – 1.5 g/t
- < 0.5 g/t



UTM Zone 17N NAD27
 Source: Pan American Silver Dec 2024

Whitney: Broulan Reef - Cross Section (Looking West +/- 10m)

1260E – Drill Hole TW24-793-794-795



2024 Drill Intercepts

Drill Estimated True Widths (m) with Gold (g/t)

Historic Underground Voids
Drill Hole Traces
Section Line

Underground Stopes, Levels, and Voids

Mineralized Domains

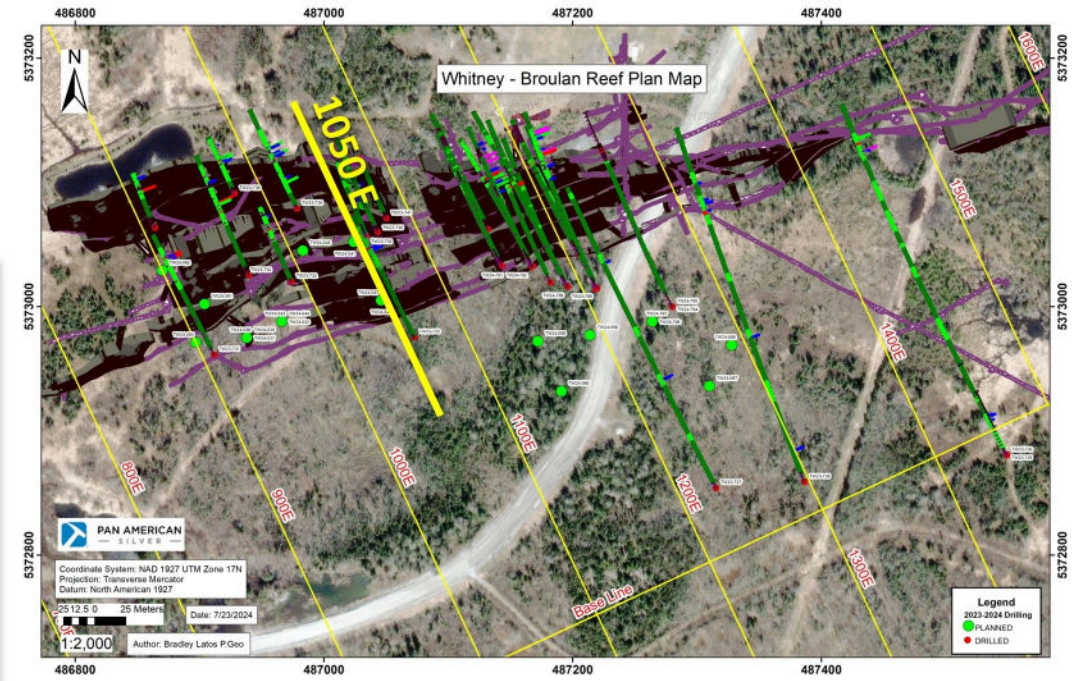
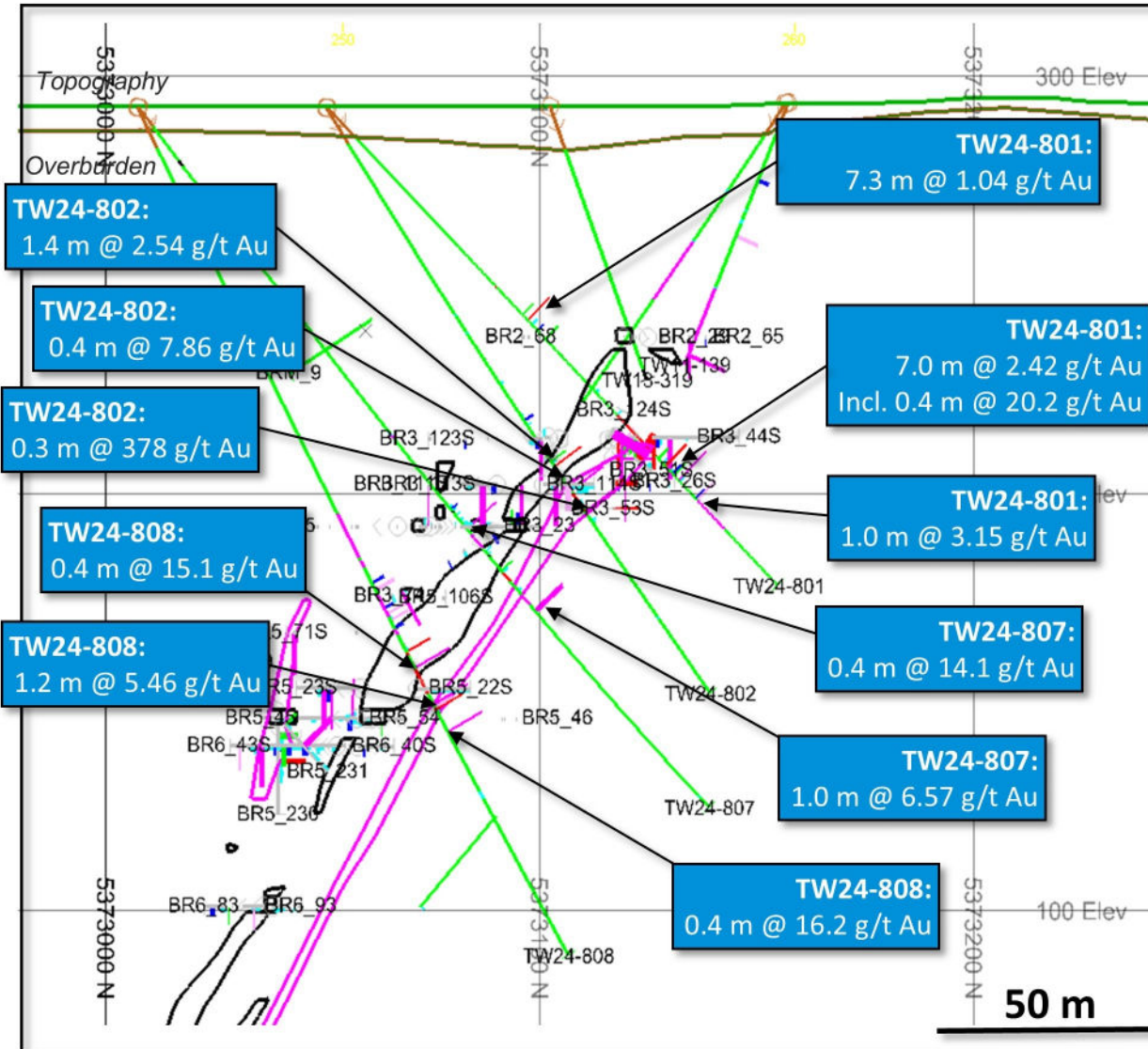
Gold Assays



Whitney: Broulan Reef - Cross Section

(Looking West +/- 10m)

1050E – Drill Hole TW24-801, 802, 807, 808



2024 Drill Intercepts

Drill Estimated True Widths (m) with Gold (g/t)

Underground Stopes, Levels, and Voids

Mineralized Domains

Gold Assays

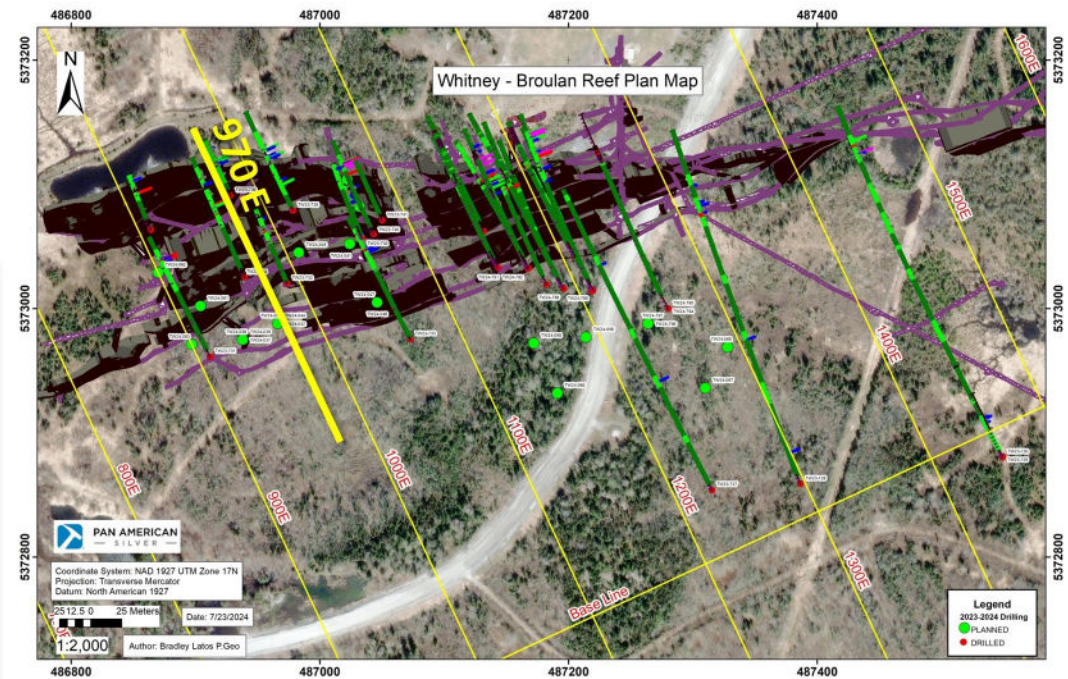
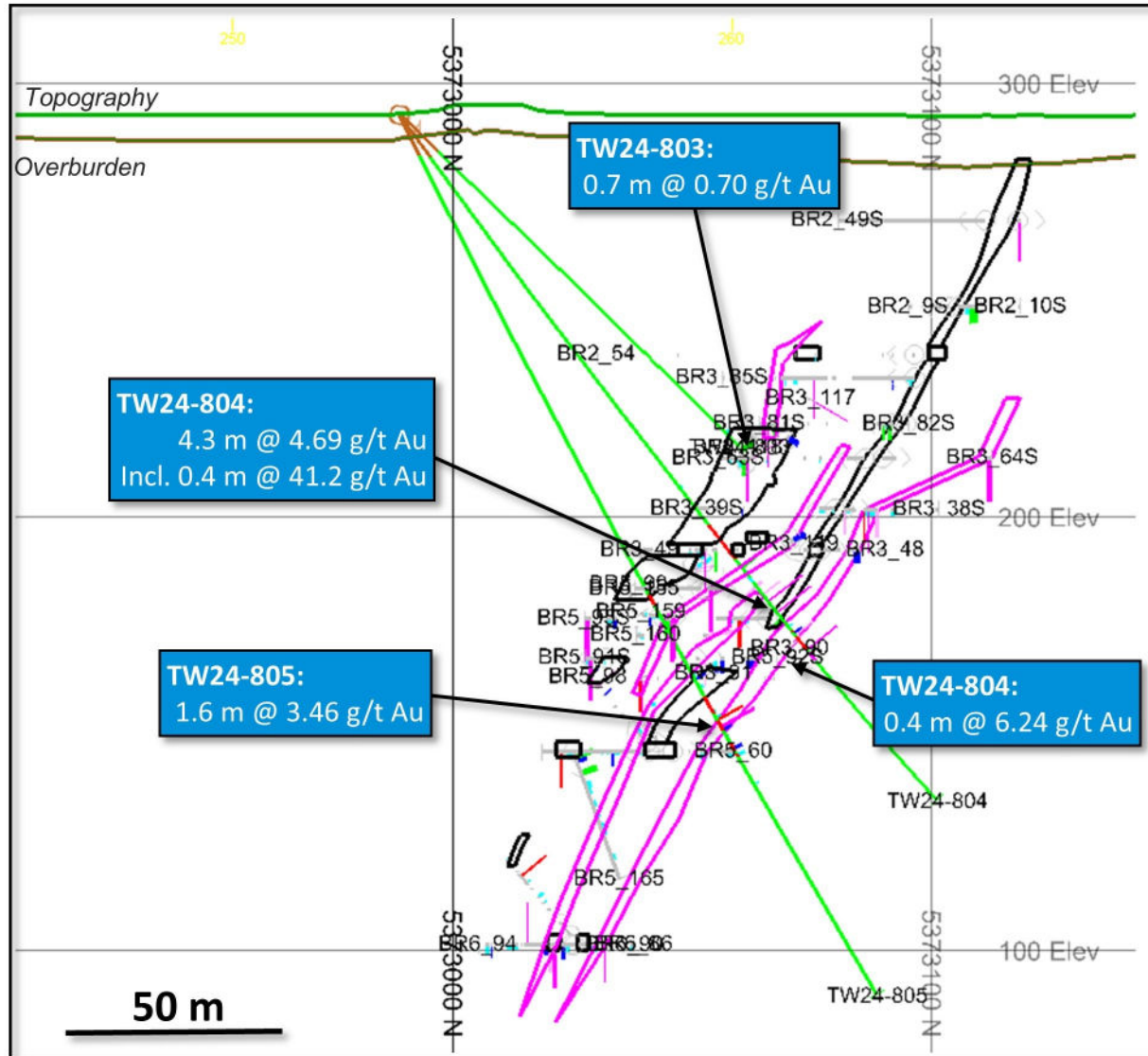


Historic Underground Voids
 Drill Hole Traces
 Section Line

Whitney: Broulan Reef - Cross Section

(Looking West +/- 10m)

970E – Drill Hole TW24-803, 804, 805



2024 Drill Intercepts

Drill Estimated True Widths (m) with Gold (g/t)

Historic Underground Voids
Drill Hole Traces
Section Line

Underground Stopes, Levels, and Voids

Mineralized Domains

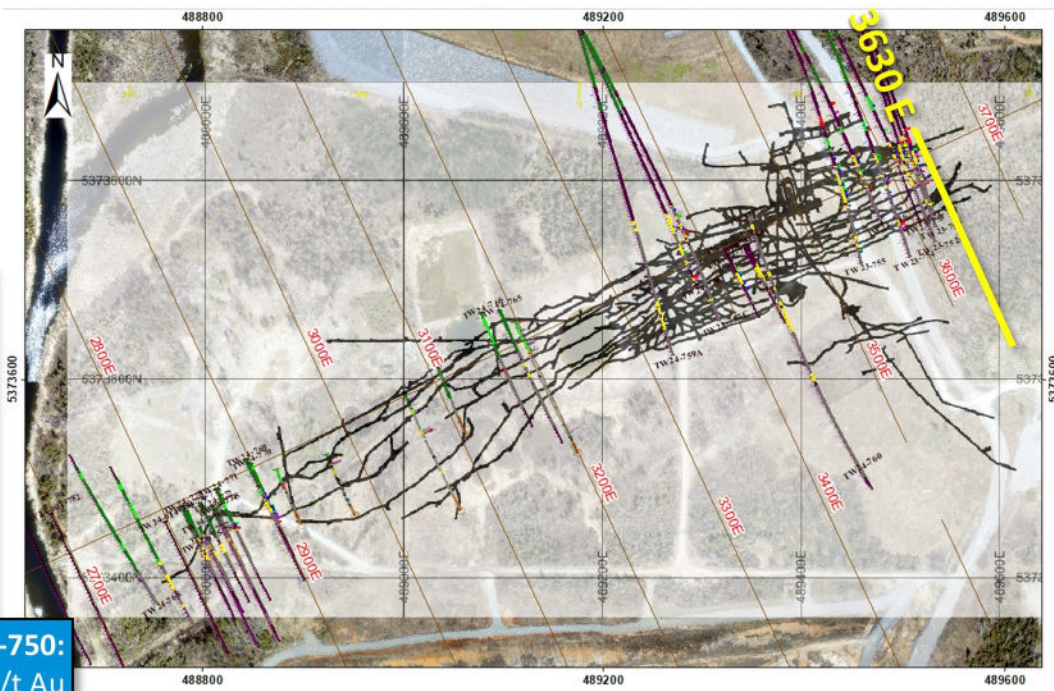
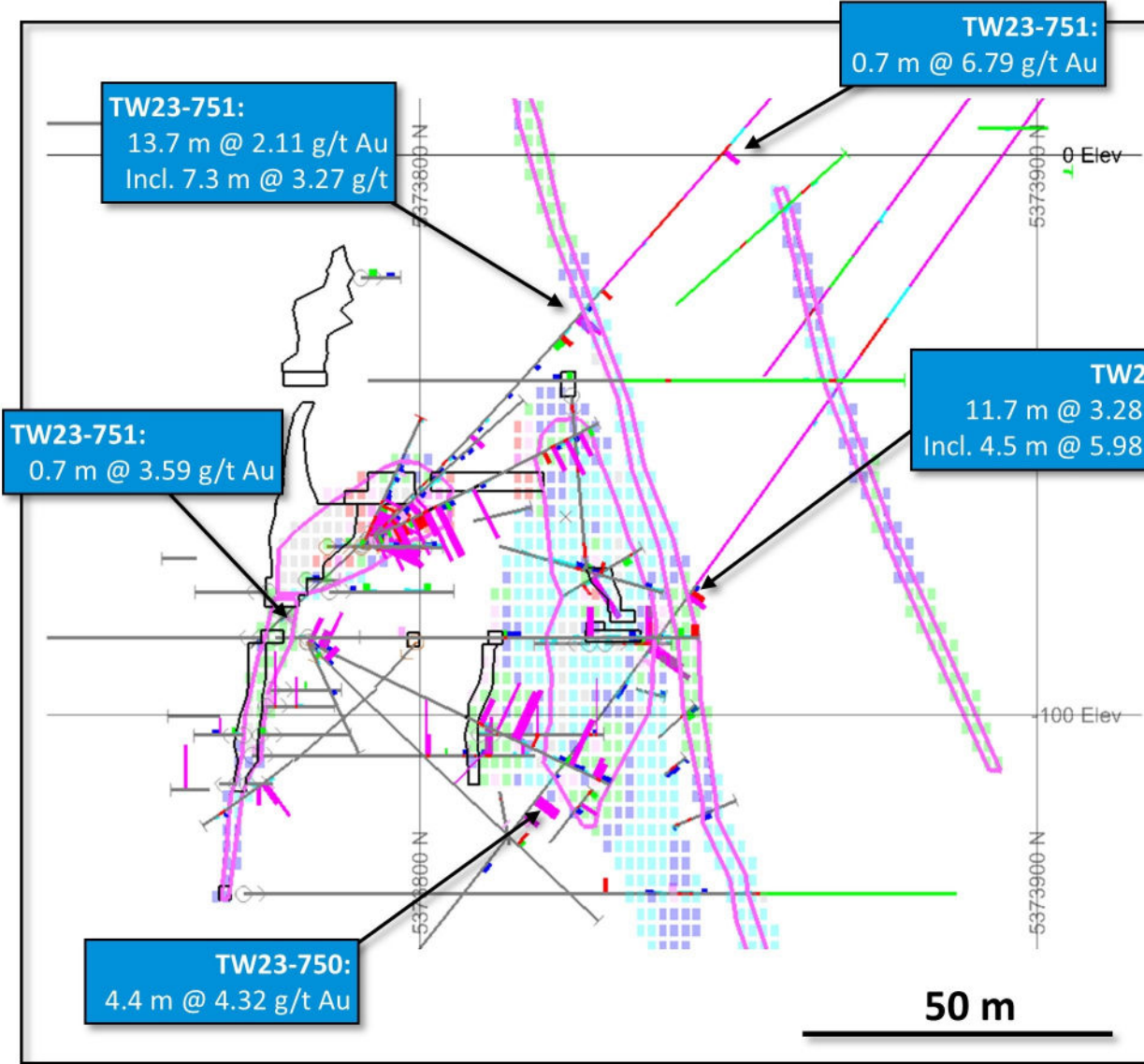
Gold Assays



Whitney: Hallnor Mine - Cross Section

(Looking West +/- 10m)

3630E – Drill Hole TW23-750 and TW23-751



Q4 2023 Drill Intercepts
Drill Estimated True Widths (m) with Gold (g/t)

Historic Underground Voids

Drill Hole Traces

Section Line

Underground Stops, Levels, and Voids

Mineralized Domains

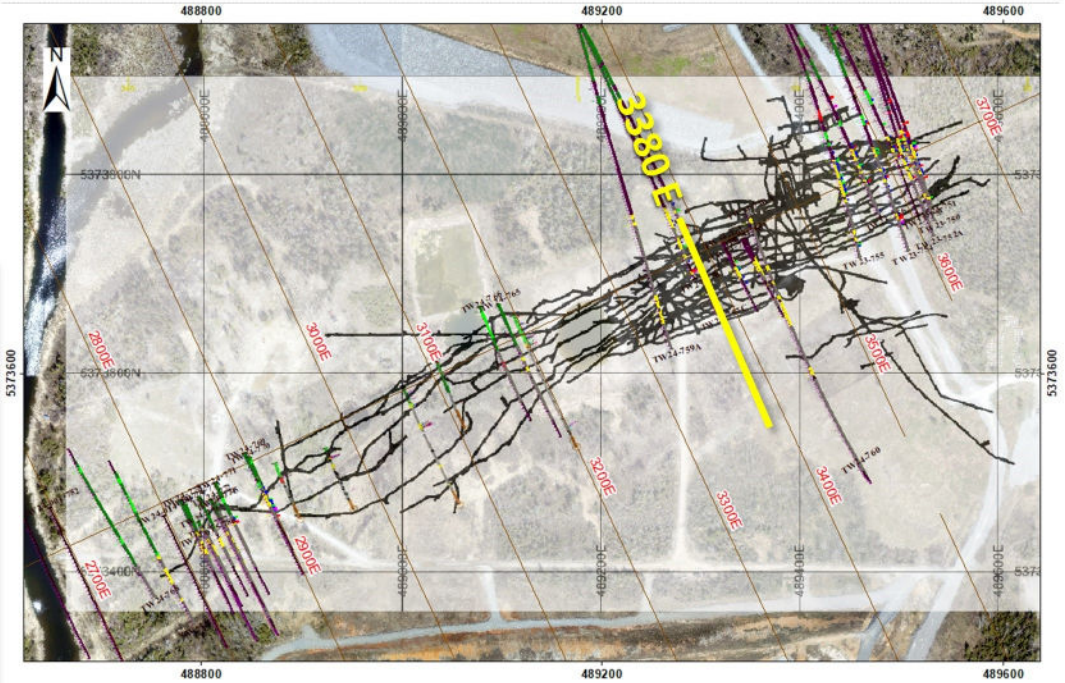
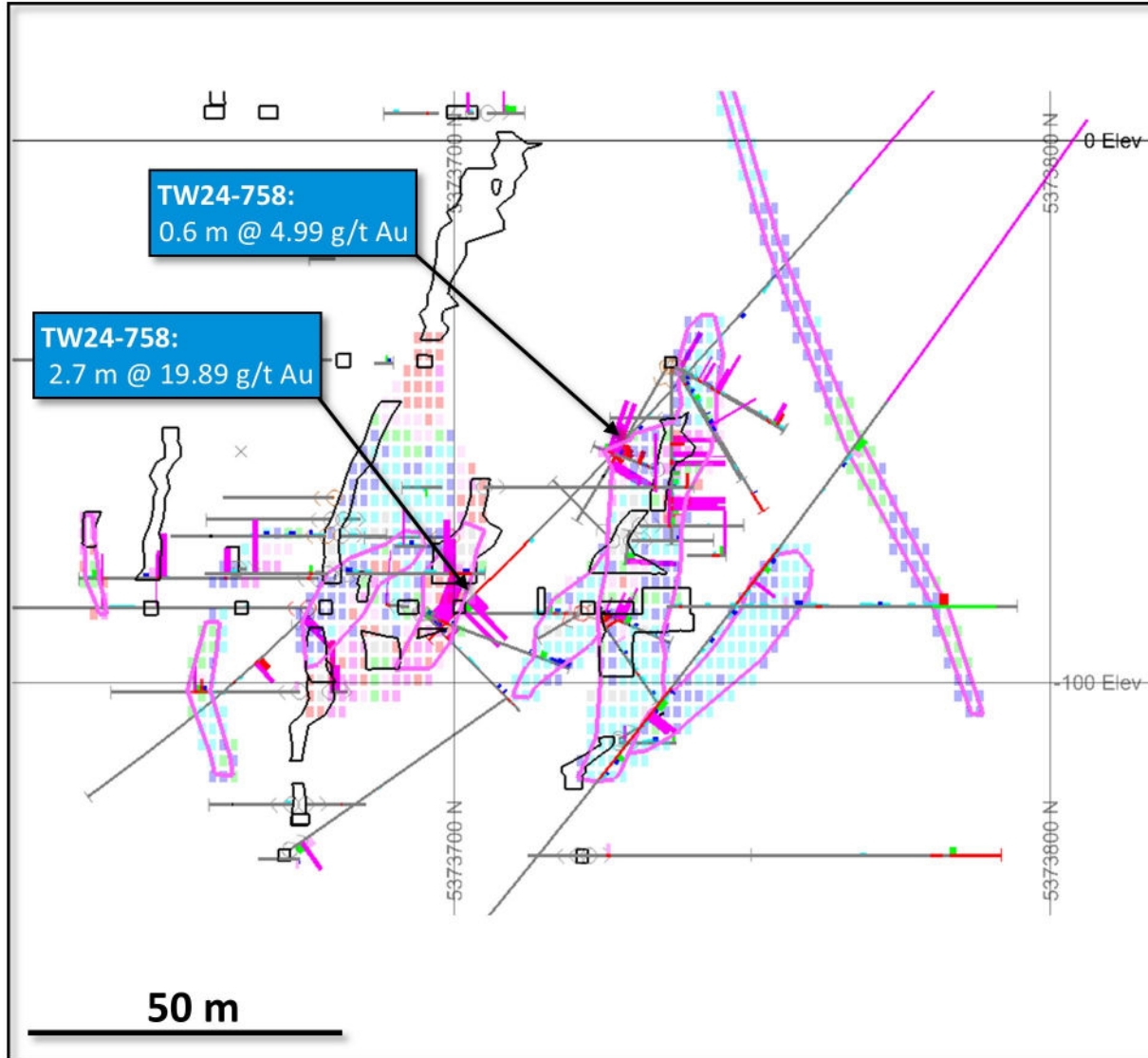
Gold Assays

- > 6.0 g/t
- 4.5 – 6.0 g/t
- 3.5 – 4.5 g/t
- 2.5 – 3.5 g/t
- 1.5 – 2.5 g/t
- 0.5 – 1.5 g/t
- < 0.5 g/t

Whitney: Hallnor Mine - Cross Section

(Looking West +/- 10m)

3380E – Drill Hole TW24-758



Q1 2024 Drill Intercepts

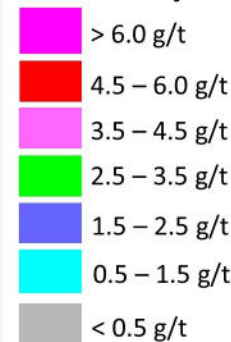
Drill Estimated True Widths (m) with Gold (g/t)



Underground Stopes, Levels, and Voids

Mineralized Domains

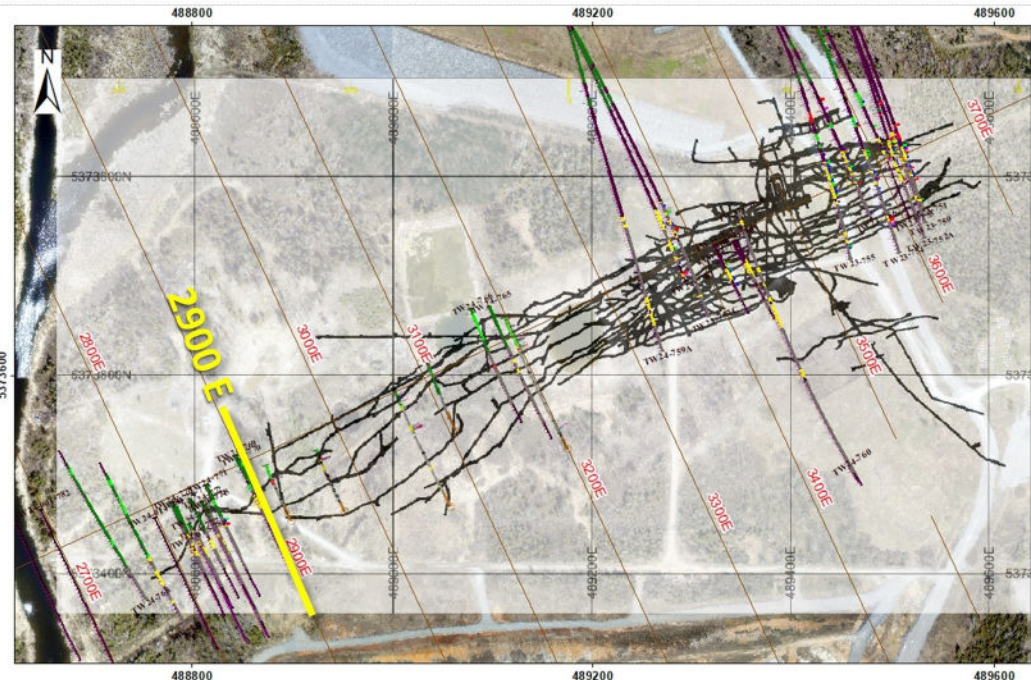
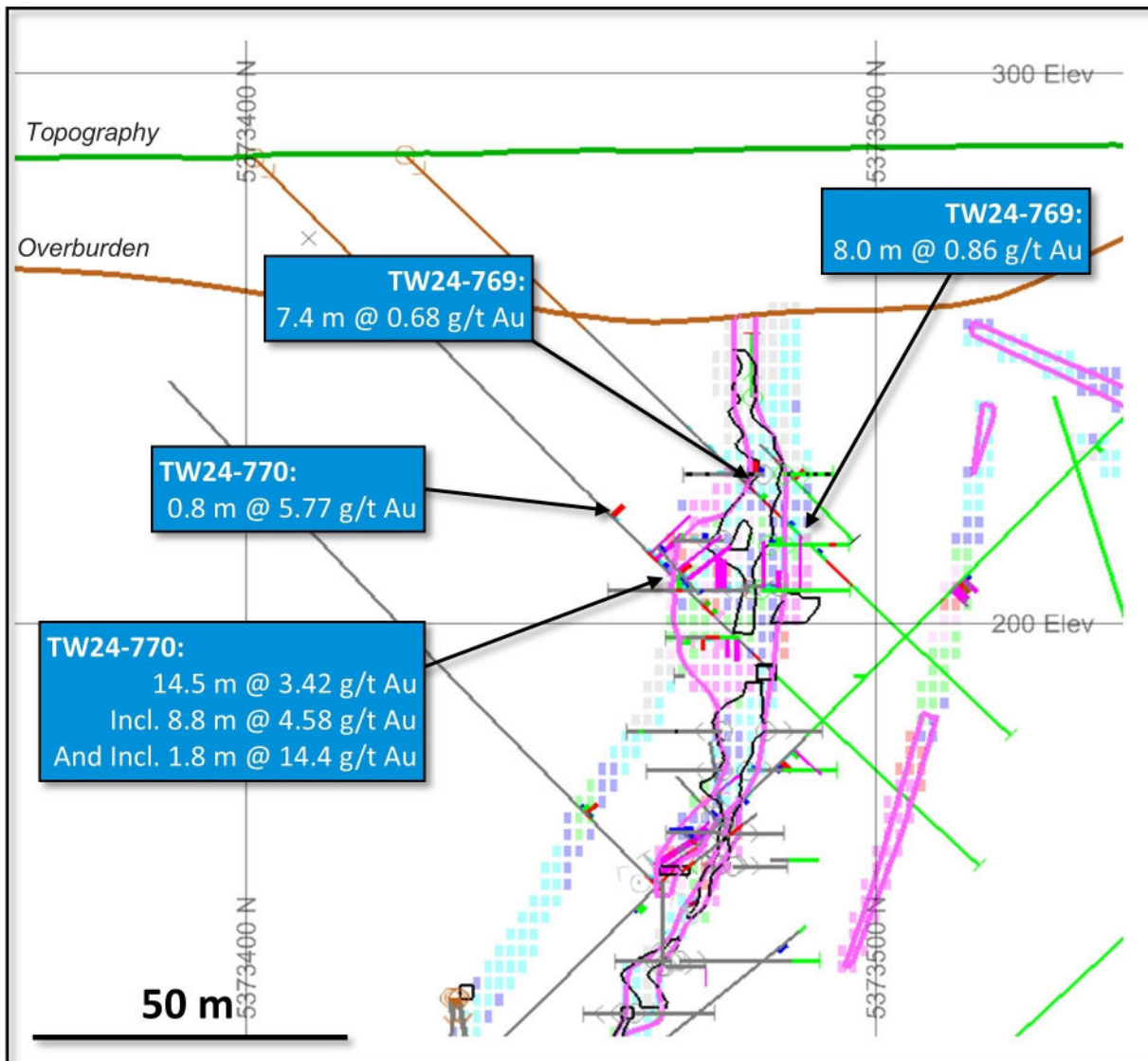
Gold Assays



Whitney: Hallnor Mine - Cross Section

(Looking West +/- 10m)

2900E – Drill Hole TW24-769 and TW24-770



Q1 2024 Drill Intercepts

Drill Estimated True Widths (m) with Gold (g/t)

Historic Underground Voids

Drill Hole Traces

Section Line

Underground Stopes, Levels, and Voids

Mineralized Domains

Gold Assays

- > 6.0 g/t
- 4.5 – 6.0 g/t
- 3.5 – 4.5 g/t
- 2.5 – 3.5 g/t
- 1.5 – 2.5 g/t
- 0.5 – 1.5 g/t
- < 0.5 g/t

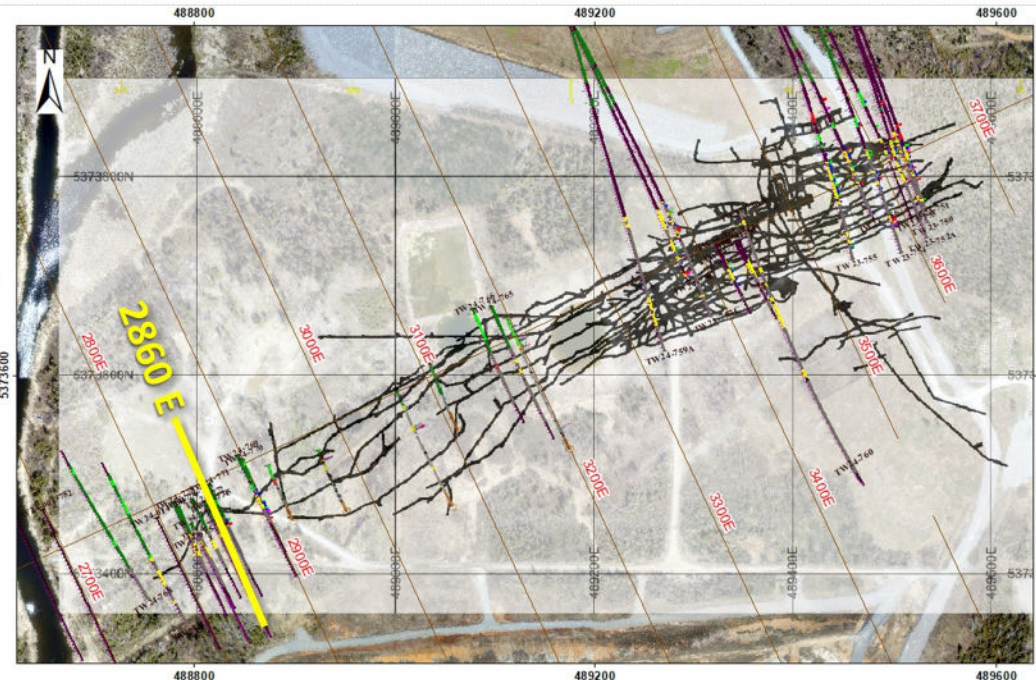
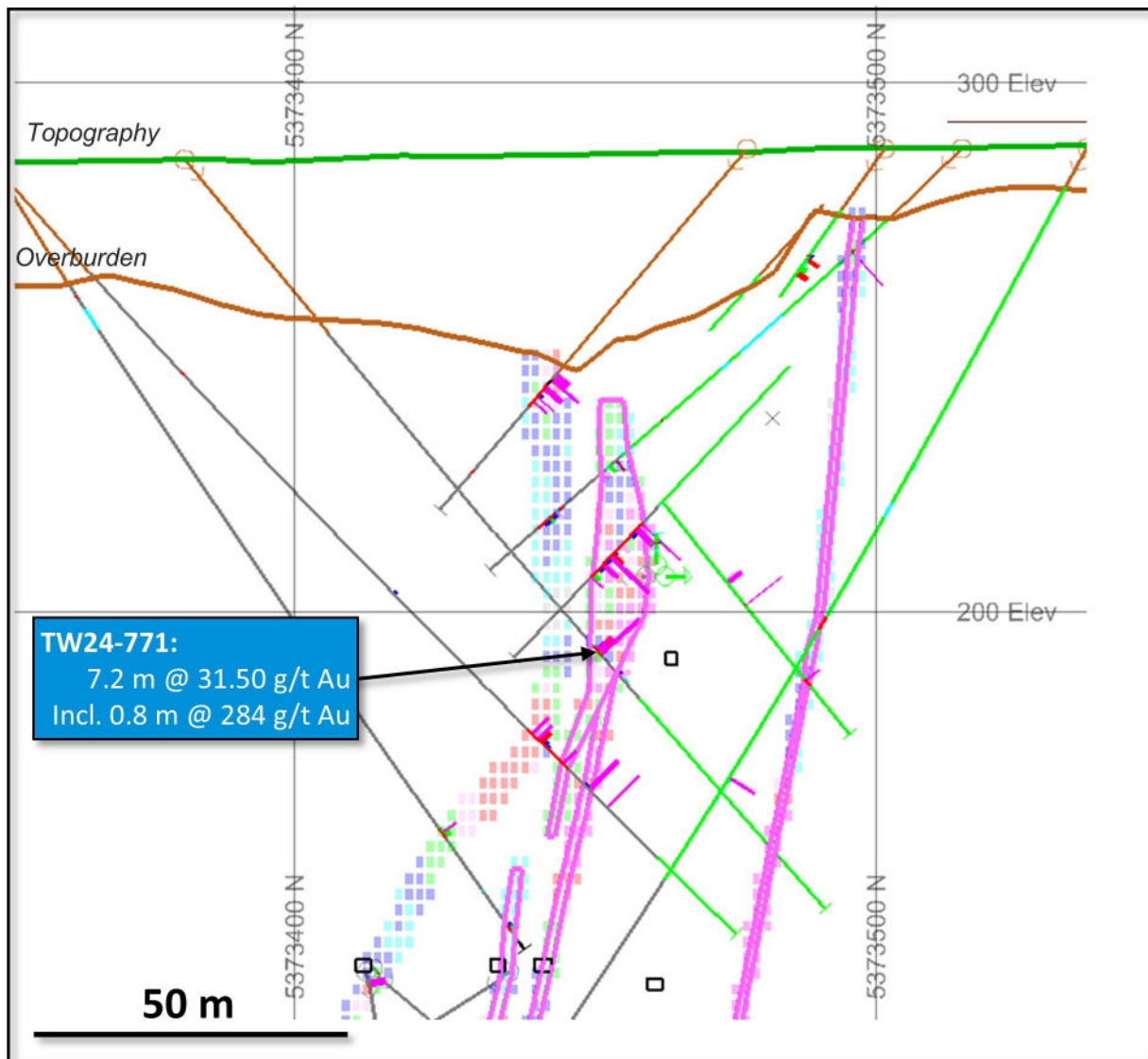


UTM Zone 17N NAD27
Source: Pan American Silver Dec 2024

Whitney: Hallnor Mine - Cross Section

(Looking West +/- 10m)

2860E – Drill Hole TW24-771



Q1 2024 Drill Intercepts

Drill Estimated True Widths (m) with Gold (g/t)

Historic Underground Voids

Drill Hole Traces

Section Line

Underground Stopes, Levels, and Voids

Mineralized Domains

Gold Assays

