

El Peñón

As referenced in the news release dated December 9, 2024

Drill Hole Collar Table Pages 1 - 3

Drill Hole Assay Composite Table..... Pages 4 - 7

Cross Section and Plans..... Pages 8 - 11

El Peñón Collars:

| Hole No. | Vein | UTM E | UTM N | Elev. (masl) | Az. (°) | Incl. (°) | Total Depth (m) |
|----------|----------------------|---------|-----------|--------------|---------|-----------|-----------------|
| UEA0090 | Aleste | 452,494 | 7,305,430 | 1,611 | 71.0 | -45.6 | 326.3 |
| UEB0036 | Bonanza | 452,584 | 7,306,861 | 1,593 | 125.0 | -32.8 | 278.7 |
| UEB0037 | Bonanza | 452,584 | 7,306,862 | 1,593 | 123.6 | -49.0 | 329.5 |
| SIW0002 | Borde Oeste | 453,002 | 7,305,818 | 1,924 | 96.0 | -54.3 | 524.4 |
| SEC0001 | Carmin | 450,800 | 7,301,510 | 1,841 | 280.0 | -47.4 | 230.0 |
| SEC0002 | Carmin | 450,611 | 7,301,514 | 1,839 | 117.0 | -55.5 | 169.8 |
| SEH0005 | Chiquilla Chica | 431,826 | 7,289,564 | 1,596 | 55.5 | -47.4 | 280.8 |
| SIH0021 | Chiquilla Chica | 431,616 | 7,289,906 | 1,576 | 159.4 | -45.1 | 219.5 |
| SIH0022 | Chiquilla Chica | 431,615 | 7,289,906 | 1,576 | 189.1 | -50.8 | 192.3 |
| SIH0023 | Chiquilla Chica | 431,737 | 7,289,902 | 1,589 | 205.2 | -49.6 | 270.1 |
| SIH0024 | Chiquilla Chica | 431,739 | 7,289,903 | 1,589 | 221.0 | -53.0 | 296.5 |
| UIH0049 | Chiquilla Chica | 431,796 | 7,289,787 | 1,464 | 223.0 | -9.7 | 130.2 |
| UIH0050 | Chiquilla Chica | 431,795 | 7,289,788 | 1,464 | 252.0 | -6.8 | 186.8 |
| UIH0051 | Chiquilla Chica | 431,799 | 7,289,785 | 1,463 | 153.0 | -23.5 | 164.5 |
| UIH0055 | Chiquilla Chica (C1) | 431,795 | 7,289,788 | 1,463 | 264.0 | -27.0 | 139.0 |
| UIH0056 | Chiquilla Chica (C1) | 431,796 | 7,289,788 | 1,463 | 252.0 | -55.4 | 149.5 |
| UIH0057 | Chiquilla Chica (C1) | 431,798 | 7,289,786 | 1,463 | 182.0 | -30.2 | 200.5 |
| SEH0006 | Chiquilla Chica (W1) | 431,827 | 7,289,563 | 1,596 | 71.0 | -49.9 | 298.7 |
| SIO0010 | Diablada | 449,785 | 7,303,310 | 1,838 | 98.0 | -58.8 | 356.0 |
| UEH0024 | Dominadora | 431,801 | 7,289,792 | 1,465 | 26.0 | -4.2 | 215.2 |
| UEH0026 | Dominadora | 431,800 | 7,289,792 | 1,464 | 20.0 | -18.4 | 201.5 |
| SED0017 | Dorada FW | 451,822 | 7,303,726 | 2,001 | 258.0 | -60.5 | 458.5 |
| SED0014 | Dorada FW W | 451,828 | 7,303,724 | 2,001 | 238.5 | -52.3 | 401.6 |
| SED0016 | Dorada FW W | 451,827 | 7,303,725 | 2,001 | 264.7 | -47.6 | 380.1 |
| SEV0010 | El Valle | 450,036 | 7,302,549 | 1,894 | 62.5 | -58.3 | 470.1 |
| SIV0010 | El Valle | 450,038 | 7,302,549 | 1,894 | 120.8 | -77.9 | 378.7 |
| UEV0039 | El Valle | 449,779 | 7,302,223 | 1,480 | 91.0 | -41.8 | 253.2 |
| UIV0068 | El Valle | 449,970 | 7,302,647 | 1,650 | 111.0 | -30.0 | 249.5 |
| UIV0070 | El Valle | 449,971 | 7,302,647 | 1,651 | 125.0 | -16.4 | 242.8 |
| UIV0072 | El Valle | 449,945 | 7,302,402 | 1,752 | 135.0 | -69.1 | 287.4 |
| UIV0077 | El Valle | 449,967 | 7,302,647 | 1,651 | 122.5 | -33.5 | 306.7 |
| UIV0078 | El Valle | 449,967 | 7,302,647 | 1,651 | 132.6 | -32.5 | 286.9 |
| UIV0079 | El Valle | 449,967 | 7,302,646 | 1,651 | 139.1 | -30.2 | 290.9 |
| UIV0080 | El Valle | 449,966 | 7,302,646 | 1,651 | 148.7 | -28.8 | 301.5 |
| UIV0081 | El Valle | 449,968 | 7,302,647 | 1,651 | 122.0 | -21.1 | 284.8 |
| UIV0082 | El Valle | 449,968 | 7,302,647 | 1,651 | 111.1 | -26.1 | 305.4 |
| UIV0083 | El Valle | 449,968 | 7,302,647 | 1,650 | 107.0 | -35.2 | 304.7 |
| UIV0085 | El Valle | 449,973 | 7,302,649 | 1,650 | 100.0 | -41.1 | 320.1 |
| SIE0015 | Esmeralda | 452,622 | 7,304,176 | 1,890 | 289.3 | -50.4 | 390.2 |
| UEE0008 | Esmeralda | 452,489 | 7,305,429 | 1,612 | 254.8 | -20.4 | 309.2 |
| UEE0009 | Esmeralda | 452,490 | 7,305,428 | 1,612 | 217.0 | -9.3 | 341.7 |
| UIE0066 | Esmeralda | 452,490 | 7,305,428 | 1,613 | 231.3 | -5.8 | 286.6 |

| Hole No. | Vein | UTM E | UTM N | Elev. (masl) | Az. (°) | Incl. (°) | Total Depth (m) |
|----------|----------------------|---------|-----------|--------------|---------|-----------|-----------------|
| SIE0014 | Esperanza | 452,424 | 7,306,638 | 1,998 | 103.4 | -70.2 | 430.1 |
| UIE0064 | Esperanza | 452,679 | 7,306,682 | 1,657 | 238.5 | -32.4 | 221.6 |
| UIU0047 | La Paloma | 453,443 | 7,307,371 | 1,673 | 259.0 | -11.7 | 193.4 |
| UIU0048 | La Paloma | 453,443 | 7,307,370 | 1,673 | 255.2 | -18.6 | 200.8 |
| UIU0051 | La Paloma | 453,308 | 7,306,946 | 1,491 | 325.0 | -22.2 | 183.5 |
| UIU0052 | La Paloma | 453,308 | 7,306,946 | 1,491 | 317.0 | -19.8 | 163.2 |
| UIU0053 | La Paloma | 453,307 | 7,306,945 | 1,490 | 315.0 | -31.1 | 183.9 |
| SDX0658 | Orito Sur | 449,845 | 7,298,843 | 1,830 | 91.1 | -57.9 | 671.1 |
| UEO0039 | Orito West | 449,677 | 7,301,485 | 1,631 | 333.0 | 41.1 | 78.9 |
| UIP0185 | P. Camp Diagonal sur | 450,969 | 7,302,369 | 1,461 | 255.0 | -32.6 | 128.9 |
| UIP0186 | P. Camp Diagonal sur | 450,969 | 7,302,370 | 1,461 | 283.0 | -22.3 | 103.4 |
| UIP0187 | P. Camp Diagonal sur | 450,969 | 7,302,370 | 1,460 | 283.0 | -41.5 | 130.4 |
| UIP0188 | P. Camp Diagonal sur | 450,969 | 7,302,371 | 1,461 | 300.0 | -22.0 | 134.7 |
| UIP0189 | P. Camp Diagonal sur | 450,969 | 7,302,371 | 1,460 | 300.0 | -40.9 | 267.8 |
| UIP0190 | P. Camp Diagonal sur | 450,969 | 7,302,369 | 1,460 | 255.0 | -50.5 | 112.3 |
| UEU0044 | Paloma | 453,444 | 7,307,369 | 1,672 | 251.0 | -33.4 | 284.7 |
| UEU0045 | Paloma | 453,443 | 7,307,372 | 1,674 | 287.8 | 17.1 | 200.5 |
| UEU0046 | Paloma | 453,302 | 7,306,938 | 1,490 | 245.0 | -32.8 | 184.3 |
| UEU0047 | Paloma | 453,302 | 7,306,938 | 1,490 | 261.0 | -41.9 | 179.5 |
| UEU0048 | Paloma | 453,306 | 7,306,942 | 1,490 | 290.0 | -48.0 | 197.6 |
| SEP0075 | Pampa Campamento | 451,319 | 7,302,088 | 1,866 | 246.7 | -69.3 | 700.1 |
| UEP0065 | Pampa Campamento | 450,700 | 7,302,875 | 1,562 | 5.0 | -28.8 | 388.0 |
| UEP0066 | Pampa Campamento | 450,700 | 7,302,874 | 1,562 | 5.0 | -47.7 | 219.5 |
| UIP0170 | Pampa Campamento | 450,977 | 7,302,370 | 1,459 | 98.6 | -59.5 | 206.8 |
| UIP0171 | Pampa Campamento | 450,978 | 7,302,369 | 1,459 | 115.2 | -61.0 | 282.9 |
| UIP0172 | Pampa Campamento | 450,643 | 7,302,889 | 1,359 | 36.0 | -25.7 | 316.3 |
| UIP0174 | Pampa Campamento | 450,631 | 7,302,892 | 1,385 | 91.7 | -34.4 | 364.1 |
| UIP0175 | Pampa Campamento | 450,932 | 7,302,081 | 1,599 | 74.0 | -54.6 | 314.2 |
| UIP0176 | Pampa Campamento | 450,631 | 7,302,891 | 1,385 | 100.9 | -30.2 | 407.6 |
| UIP0177 | Pampa Campamento | 450,932 | 7,302,082 | 1,599 | 55.0 | -50.6 | 333.6 |
| UIP0178 | Pampa Campamento | 450,932 | 7,302,079 | 1,599 | 100.0 | -57.1 | 344.3 |
| UIP0181 | Pampa Campamento | 450,631 | 7,302,892 | 1,385 | 92.0 | -38.7 | 510.0 |
| UIP0183 | Pampa Campamento | 450,631 | 7,302,892 | 1,385 | 92.0 | -34.8 | 474.6 |
| UIP0184 | Pampa Campamento | 450,631 | 7,302,891 | 1,387 | 110.0 | -31.6 | 522.2 |
| SEP0040 | Pampa Sur | 451,158 | 7,300,888 | 1,847 | 277.8 | -59.3 | 523.3 |
| SEP0042 | Pampa Sur | 451,109 | 7,300,492 | 1,838 | 254.7 | -62.3 | 499.1 |
| SEP0044 | Pampa Sur | 451,166 | 7,300,288 | 1,827 | 270.3 | -62.0 | 606.0 |
| SEP0046 | Pampa Sur | 451,130 | 7,300,435 | 1,832 | 251.7 | -60.0 | 537.9 |
| SEP0047 | Pampa Sur | 451,108 | 7,300,543 | 1,840 | 265.9 | -58.0 | 425.6 |
| SEP0048 | Pampa Sur | 451,142 | 7,300,100 | 1,827 | 286.3 | -56.8 | 492.2 |
| SEP0051 | Pampa Sur | 451,180 | 7,300,738 | 1,857 | 275.9 | -54.0 | 539.2 |
| SEP0052 | Pampa Sur | 451,176 | 7,300,738 | 1,856 | 274.9 | -48.7 | 472.1 |
| SEP0053 | Pampa Sur | 451,179 | 7,300,740 | 1,856 | 268.6 | -46.0 | 448.6 |
| SEP0054 | Pampa Sur | 451,101 | 7,300,609 | 1,842 | 286.4 | -54.2 | 422.7 |
| SEP0055 | Pampa Sur | 451,102 | 7,300,607 | 1,842 | 270.5 | -63.1 | 474.0 |
| SEP0056 | Pampa Sur | 451,107 | 7,300,543 | 1,839 | 271.4 | -56.0 | 408.1 |
| SEP0058 | Pampa Sur | 451,068 | 7,301,110 | 1,838 | 283.1 | -55.2 | 360.0 |
| SEP0060 | Pampa Sur | 451,122 | 7,301,057 | 1,838 | 272.9 | -54.5 | 446.2 |
| SEP0062 | Pampa Sur | 451,210 | 7,301,014 | 1,842 | 268.6 | -49.8 | 509.8 |
| SEP0064 | Pampa Sur | 451,188 | 7,299,660 | 1,822 | 269.2 | -54.4 | 550.0 |
| SEP0065 | Pampa Sur | 451,129 | 7,300,436 | 1,832 | 273.1 | -52.1 | 436.4 |
| SEP0066 | Pampa Sur | 451,109 | 7,300,814 | 1,846 | 282.3 | -52.7 | 371.6 |
| SEP0067 | Pampa Sur | 451,281 | 7,301,054 | 1,844 | 259.0 | -52.0 | 670.5 |
| SEP0069 | Pampa Sur | 450,999 | 7,301,021 | 1,834 | 279.0 | -53.3 | 268.7 |

| Hole No. | Vein | UTM E | UTM N | Elev. (masl) | Az. (°) | Incl. (°) | Total Depth (m) |
|----------|-----------------|---------|-----------|--------------|---------|-----------|-----------------|
| SEP0070 | Pampa Sur | 451,212 | 7,301,015 | 1,842 | 281.5 | -50.3 | 536.9 |
| SEP0071 | Pampa Sur | 451,213 | 7,301,015 | 1,842 | 276.6 | -56.7 | 541.7 |
| SEP0072 | Pampa Sur | 451,417 | 7,301,013 | 1,848 | 268.0 | -44.9 | 540.5 |
| SEP0076 | Pampa Sur | 451,219 | 7,300,380 | 1,830 | 272.3 | -54.2 | 594.0 |
| SIP0051 | Pampa Sur | 451,110 | 7,300,813 | 1,846 | 263.9 | -54.4 | 414.5 |
| SIP0052 | Pampa Sur | 451,111 | 7,300,814 | 1,846 | 271.2 | -59.1 | 437.3 |
| SIP0053 | Pampa Sur | 451,155 | 7,300,690 | 1,856 | 278.1 | -53.8 | 470.3 |
| SIP0055 | Pampa Sur | 451,097 | 7,300,900 | 1,840 | 264.5 | -56.5 | 392.9 |
| SIP0056 | Pampa Sur | 451,156 | 7,300,891 | 1,847 | 273.4 | -48.7 | 424.3 |
| SIP0057 | Pampa Sur | 451,227 | 7,300,782 | 1,852 | 278.2 | -44.0 | 510.0 |
| SIP0058 | Pampa Sur | 451,227 | 7,300,779 | 1,853 | 271.1 | -47.5 | 530.0 |
| SIP0059 | Pampa Sur | 451,210 | 7,300,700 | 1,853 | 269.2 | -44.3 | 525.0 |
| SIP0061 | Pampa Sur | 451,066 | 7,301,110 | 1,837 | 273.3 | -55.7 | 367.5 |
| SIP0062 | Pampa Sur | 451,069 | 7,301,110 | 1,837 | 273.0 | -59.7 | 421.1 |
| SIP0063 | Pampa Sur | 451,158 | 7,300,889 | 1,847 | 277.9 | -52.2 | 463.2 |
| SIP0064 | Pampa Sur | 451,108 | 7,300,813 | 1,847 | 278.8 | -52.5 | 401.5 |
| SIP0065 | Pampa Sur | 451,210 | 7,301,013 | 1,842 | 261.5 | -46.6 | 500.0 |
| SIP0066 | Pampa Sur | 451,197 | 7,300,598 | 1,843 | 265.5 | -46.1 | 470.7 |
| SIP0067 | Pampa Sur | 451,124 | 7,301,057 | 1,838 | 260.8 | -54.6 | 477.0 |
| SIP0068 | Pampa Sur | 451,178 | 7,300,736 | 1,856 | 272.0 | -47.7 | 476.8 |
| SIP0070 | Pampa Sur | 451,158 | 7,300,890 | 1,846 | 276.8 | -54.8 | 494.6 |
| SIP0071 | Pampa Sur | 451,254 | 7,300,665 | 1,845 | 263.8 | -44.1 | 502.6 |
| SIP0072 | Pampa Sur | 451,069 | 7,301,109 | 1,838 | 269.1 | -64.6 | 461.3 |
| SIP0073 | Pampa Sur | 451,209 | 7,301,013 | 1,842 | 277.5 | -45.1 | 479.7 |
| SIP0075 | Pampa Sur | 451,158 | 7,300,688 | 1,856 | 264.7 | -58.6 | 533.4 |
| SIP0080 | Pampa Sur (+50) | 451,122 | 7,301,059 | 1,838 | 281.4 | -61.3 | 382.7 |
| UIS0031 | Pampita | 450,970 | 7,302,367 | 1,460 | 217.9 | -50.3 | 240.5 |
| SIR0039 | Providencia | 451,520 | 7,302,612 | 1,899 | 273.4 | -50.1 | 290.6 |
| SIR0040 | Providencia | 451,523 | 7,302,613 | 1,899 | 241.3 | -54.1 | 281.1 |
| SDX0654 | Santa Laura | 451,942 | 7,299,789 | 1,843 | 268.9 | -47.2 | 683.7 |
| SES0035 | Sorpresa | 450,948 | 7,300,958 | 1,833 | 95.0 | -56.9 | 409.8 |
| SES0036 | Sorpresa | 450,948 | 7,300,958 | 1,833 | 72.8 | -58.9 | 445.6 |
| UES0035 | Sorpresa | 450,970 | 7,302,368 | 1,461 | 243.0 | -37.6 | 231.1 |
| UIS0022 | Sorpresa | 450,942 | 7,302,478 | 1,513 | 222.1 | -14.3 | 271.3 |
| UIS0023 | Sorpresa | 450,942 | 7,302,479 | 1,514 | 240.3 | 3.1 | 230.7 |
| UIS0024 | Sorpresa | 450,970 | 7,302,368 | 1,461 | 245.7 | -3.2 | 218.5 |
| UIS0025 | Sorpresa | 450,971 | 7,302,368 | 1,459 | 246.0 | 3.8 | 239.5 |
| UIS0026 | Sorpresa | 450,970 | 7,302,368 | 1,462 | 235.0 | 3.3 | 232.0 |
| UIS0027 | Sorpresa | 450,970 | 7,302,367 | 1,461 | 223.0 | 10.2 | 293.4 |
| UIS0028 | Sorpresa | 450,970 | 7,302,367 | 1,461 | 230.0 | -24.5 | 100.3 |
| UIS0029 | Sorpresa | 450,970 | 7,302,368 | 1,461 | 225.0 | -2.6 | 239.9 |
| UIS0032 | Sorpresa | 450,971 | 7,302,367 | 1,463 | 198.3 | -67.3 | 130.6 |
| SEN0001 | Vista Norte | 449,863 | 7,303,251 | 1,853 | 89.8 | -48.8 | 450.5 |

El Peñón Drill Hole Assay Composite Table:

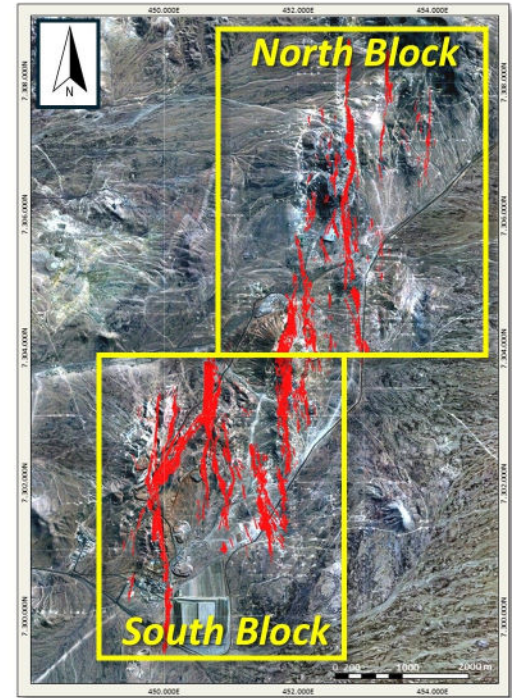
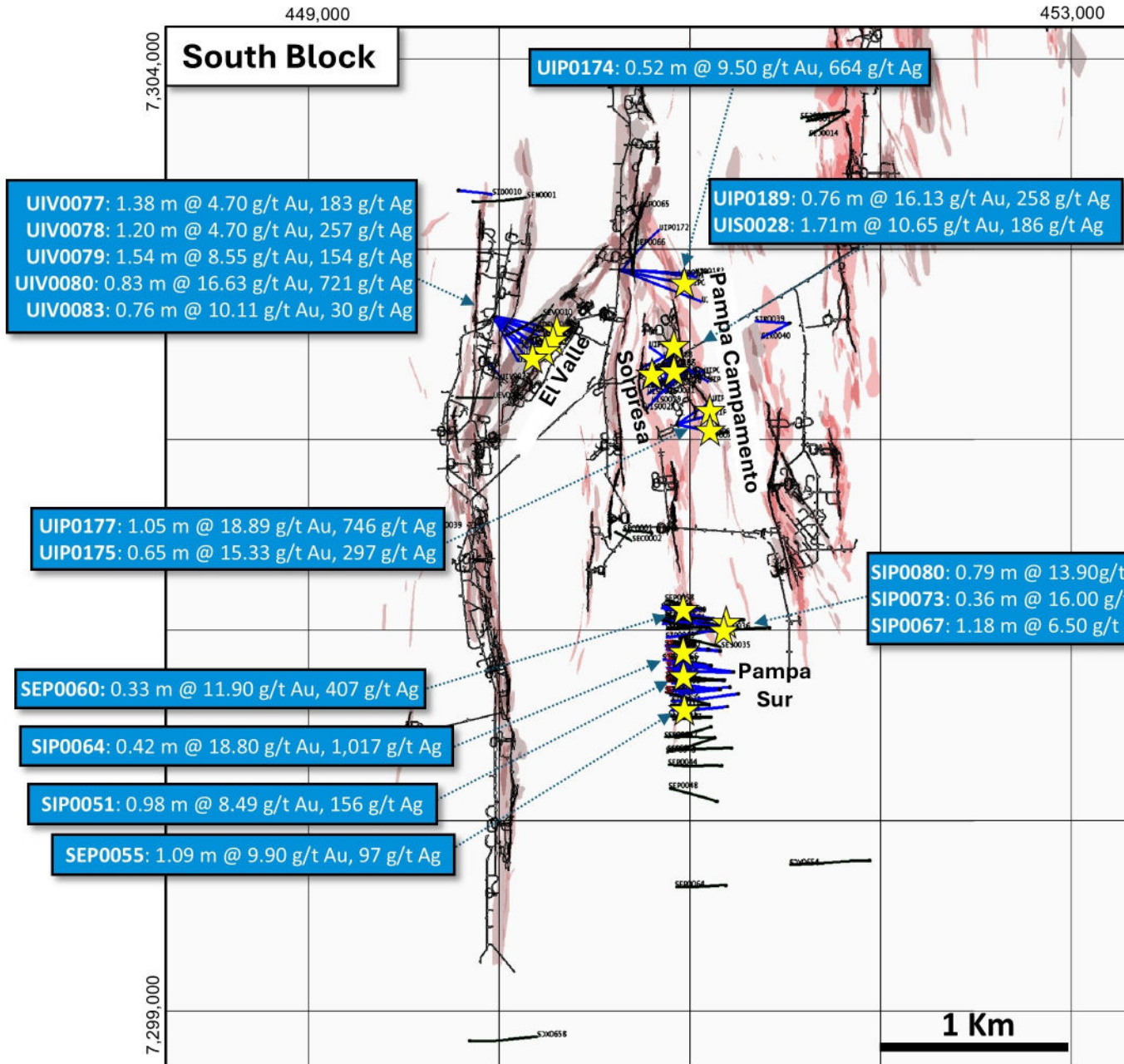
| Hole No. | Vein | From (m) | To (m) | Int. (m) | Est. True Width (m) | Au (g/t) | Ag (g/t) |
|----------|----------------------|---------------------|--------|----------|---------------------|----------|----------|
| SDX0654 | Santa Laura | 478.00 | 480.00 | 2.00 | 1.29 | 0.96 | 44 |
| SDX0658 | Orito Sur | 570.90 | 571.80 | 0.90 | 0.64 | 0.10 | 5 |
| SEC0001 | Carmin | No vein encountered | | | | | |
| SEC0002 | Carmin | No vein encountered | | | | | |
| SED0014 | Dorada FW W | 380.10 | 381.17 | 1.07 | 0.72 | 1.34 | 53 |
| SED0016 | Dorada FW W | 346.45 | 347.85 | 1.40 | 0.77 | 1.76 | 38 |
| SED0017 | Dorada FW | 444.00 | 444.70 | 0.70 | 0.37 | 0.40 | 17 |
| SEH0005 | Chiquilla Chica (C1) | No vein encountered | | | | | |
| SEH0006 | Chiquilla Chica (C1) | No vein encountered | | | | | |
| SEN0001 | Vista Norte | 403.28 | 403.83 | 0.55 | 0.45 | 0.52 | 7 |
| SEP0040 | Pampa Sur | 492.26 | 492.48 | 0.22 | 0.18 | 0.20 | 3 |
| SEP0042 | Pampa Sur | No vein encountered | | | | | |
| SEP0044 | Pampa Sur | No vein encountered | | | | | |
| SEP0046 | Pampa Sur | 403.00 | 404.00 | 1.00 | 0.66 | 0.08 | 7 |
| SEP0047 | Pampa Sur | 364.00 | 364.75 | 0.75 | 0.56 | 0.53 | 22 |
| SEP0048 | Pampa Sur | No vein encountered | | | | | |
| SEP0051 | Pampa Sur | 471.60 | 472.00 | 0.40 | 0.32 | 0.15 | 0 |
| SEP0052 | Pampa Sur | 446.95 | 447.40 | 0.45 | 0.29 | 9.50 | 645 |
| SEP0053 | Pampa Sur | 416.90 | 417.70 | 0.80 | 0.56 | 0.30 | 13 |
| SEP0054 | Pampa Sur | 348.55 | 349.00 | 0.45 | 0.33 | 0.01 | 1 |
| SEP0055 | Pampa Sur | 374.00 | 376.00 | 2.00 | 1.09 | 9.90 | 97 |
| SEP0056 | Pampa Sur | 343.00 | 344.00 | 1.00 | 0.65 | 0.64 | 28 |
| SEP0058 | Pampa Sur | 316.93 | 318.25 | 1.32 | 0.83 | 3.40 | 263 |
| SEP0060 | Pampa Sur | 413.00 | 413.70 | 0.70 | 0.33 | 11.90 | 407 |
| SEP0062 | Pampa Sur | 481.20 | 481.60 | 0.40 | 0.29 | 5.50 | 14 |
| | Pampa Sur (+30) | 442.52 | 443.07 | 0.55 | 0.45 | 2.07 | 188 |
| SEP0064 | Pampa Sur | 449.07 | 449.28 | 0.21 | 0.16 | 0.01 | 0 |
| SEP0065 | Pampa Sur | 385.37 | 385.88 | 0.51 | 0.39 | 0.02 | 7 |
| SEP0066 | Pampa Sur | 362.30 | 362.87 | 0.57 | 0.37 | 0.16 | 7 |
| SEP0067 | Pampa Sur | 593.00 | 594.00 | 1.00 | 0.64 | 1.67 | 10 |
| SEP0069 | Pampa Sur | 197.31 | 198.32 | 1.01 | 0.62 | 0.17 | 1 |
| SEP0070 | Pampa Sur | 499.80 | 501.00 | 1.20 | 0.65 | 0.56 | 4 |
| | Pampa Sur (+50) | 405.55 | 406.10 | 0.55 | 0.37 | 3.31 | 340 |
| SEP0071 | Pampa Sur | 475.95 | 476.85 | 0.90 | 0.52 | 1.52 | 131 |
| SEP0072 | Pampa Sur | 464.00 | 465.00 | 1.00 | 0.69 | 5.50 | 403 |
| SEP0075 | Pampa Campamento | No vein encountered | | | | | |
| SEP0076 | Pampa Sur | 454.36 | 456.45 | 2.09 | 0.34 | 0.30 | 38 |
| SES0035 | Sorpresa | 342.75 | 343.25 | 0.50 | 0.37 | 1.97 | 145 |
| SES0036 | Sorpresa | 333.80 | 334.20 | 0.40 | 0.30 | 22.00 | 838 |
| SEV0010 | El Valle | 341.00 | 343.00 | 2.00 | 1.24 | 1.43 | 42 |

| Hole No. | Vein | From (m) | To (m) | Int. (m) | Est. True Width (m) | Au (g/t) | Ag (g/t) |
|----------|---------------------------|---------------------|--------|----------|---------------------|----------|----------|
| SIE0014 | Esmeralda | No vein encountered | | | | | |
| SIE0015 | Esmeralda | 248.60 | 249.50 | 0.90 | 0.54 | 10.10 | 1139 |
| SIH0021 | Chiquilla Chica (C1) | 184.30 | 185.90 | 1.60 | 0.88 | 0.77 | 1019 |
| SIH0022 | Chiquilla Chica (C1) | 164.10 | 165.27 | 1.17 | 0.70 | 0.54 | 389 |
| SIH0023 | Chiquilla Chica (C1) | 214.68 | 215.20 | 0.52 | 0.34 | 0.40 | 1232 |
| SIH0024 | Chiquilla Chica (C1) | 221.00 | 222.50 | 1.50 | 0.25 | 0.04 | 101 |
| SIO0010 | Diablada | 280.95 | 281.50 | 0.55 | 0.42 | 0.30 | 23 |
| SIP0051 | Pampa Sur | 364.18 | 365.70 | 1.52 | 0.98 | 8.49 | 156 |
| SIP0052 | Pampa Sur | 393.92 | 396.15 | 2.23 | 1.27 | 3.03 | 149 |
| SIP0053 | Pampa Sur | 447.20 | 448.00 | 0.80 | 0.61 | 0.17 | 4 |
| SIP0055 | Pampa Sur | 358.60 | 359.15 | 0.55 | 0.39 | 1.10 | 96 |
| SIP0056 | Pampa Sur | 398.07 | 399.29 | 1.22 | 0.92 | 4.76 | 359 |
| SIP0057 | Pampa Sur | 490.33 | 492.43 | 2.10 | 1.27 | 0.68 | 40 |
| SIP0058 | Pampa Sur | 495.96 | 496.23 | 0.27 | 0.20 | 0.40 | 6 |
| SIP0059 | Pampa Sur | 464.61 | 465.10 | 0.49 | 0.31 | 0.20 | 2 |
| SIP0061 | Pampa Sur | 308.50 | 308.80 | 0.30 | 0.24 | 13.20 | 160 |
| SIP0062 | Pampa Sur | 335.62 | 336.24 | 0.62 | 0.42 | 0.04 | 0 |
| SIP0063 | Pampa Sur | 410.53 | 411.44 | 0.91 | 0.67 | 5.63 | 405 |
| SIP0064 | Pampa Sur | 352.12 | 352.60 | 0.48 | 0.42 | 18.80 | 1017 |
| SIP0065 | Pampa Sur | 460.35 | 460.94 | 0.59 | 0.44 | 4.77 | 519 |
| SIP0065 | Pampa Sur Este | 425.07 | 425.92 | 0.85 | 0.63 | 3.07 | 192 |
| SIP0066 | Pampa Sur | 436.85 | 437.92 | 1.07 | 0.65 | 0.13 | 3 |
| SIP0067 | Pampa Sur | 414.68 | 415.10 | 0.42 | 0.35 | 0.04 | 4 |
| | Pampa Sur (+50) | 328.00 | 330.00 | 2.00 | 1.18 | 6.50 | 493 |
| SIP0068 | Pampa Sur | 428.00 | 428.70 | 0.70 | 0.48 | 0.23 | 6 |
| SIP0070 | Pampa Sur | 456.55 | 457.52 | 0.97 | 0.23 | 2.28 | 152 |
| SIP0071 | Pampa Sur | 482.95 | 483.25 | 0.30 | 0.22 | 1.08 | 41 |
| SIP0072 | Pampa Sur | 400.56 | 401.45 | 0.89 | 0.51 | 0.04 | 5 |
| SIP0073 | Pampa Sur | 450.00 | 451.00 | 1.00 | 0.64 | 2.15 | 98 |
| | Pampa Sur Este | 378.68 | 379.38 | 0.70 | 0.36 | 16.00 | 1651 |
| SIP0075 | Pampa Sur | 456.50 | 458.00 | 1.50 | 0.69 | 3.90 | 8 |
| SIP0080 | Pampa Sur (+50) | 358.50 | 360.00 | 1.50 | 0.79 | 13.90 | 716 |
| SIR0039 | Providencia | 260.60 | 261.00 | 0.40 | 0.24 | 0.40 | 5 |
| SIR0040 | Providencia | 252.27 | 252.80 | 0.53 | 0.39 | 5.80 | 388 |
| SIV0010 | El Valle | 365.80 | 366.40 | 0.60 | 0.35 | 1.50 | 31 |
| SIW0002 | Borde Oeste | 469.50 | 470.60 | 1.10 | 0.54 | 0.42 | 59 |
| UEA0090 | Aleste | 286.19 | 286.75 | 0.56 | 0.46 | 0.83 | 26 |
| UEB0036 | Bonanza | 253.09 | 253.75 | 0.66 | 0.60 | 2.60 | 2 |
| UEB0037 | Bonanza | 260.00 | 262.00 | 2.00 | 1.66 | 0.10 | 4 |
| UEE0008 | Esmeralda | 242.00 | 242.96 | 0.96 | 0.60 | 0.02 | 1 |
| UEE0009 | Esmeralda | 295.80 | 296.30 | 0.50 | 0.22 | 0.01 | 0 |
| UEH0024 | Dominadora | 106.15 | 135.00 | 28.85 | 4.10 | 3.62 | 1592 |
| UEH0026 | Dominadora | 50.77 | 55.67 | 4.90 | 1.20 | 0.23 | 1349 |
| UEO0039 | Orito West | 51.20 | 53.20 | 2.00 | 1.39 | 2.70 | 170 |
| UEP0065 | Pampa Campamento | 357.00 | 357.65 | 0.65 | 0.15 | 8.80 | 0 |
| UEP0066 | Pampa Campamento Diagonal | No vein encountered | | | | | |
| UES0035 | Sorpresa | No vein encountered | | | | | |

| Hole No. | Vein | From (m) | To (m) | Int. (m) | Est. True Width (m) | Au (g/t) | Ag (g/t) |
|----------|-------------------------------|---------------------|--------|----------|---------------------|----------|----------|
| UEU0044 | La Paloma | 182.08 | 182.45 | 0.37 | 0.26 | 0.70 | 87 |
| UEU0045 | La Paloma | 170.50 | 171.45 | 0.95 | 0.83 | 1.45 | 62 |
| UEU0046 | La Paloma | No vein encountered | | | | | |
| UEU0047 | La Paloma | 123.90 | 124.62 | 0.72 | 0.47 | 0.03 | 20 |
| UEU0048 | La Paloma | 163.81 | 164.30 | 0.49 | 0.20 | 0.17 | 75 |
| UEV0039 | El Valle | 186.40 | 186.80 | 0.40 | 0.38 | 0.10 | 2 |
| UIE0064 | Esperanza | 203.00 | 203.50 | 0.50 | 0.32 | 5.60 | 572 |
| UIE0066 | Esmeralda | 243.18 | 243.67 | 0.49 | 0.42 | 0.45 | 6 |
| UIH0049 | Chiquilla Chica (C1) | 40.05 | 41.70 | 1.65 | 1.46 | 0.44 | 2547 |
| UIH0050 | Chiquilla Chica (C1) | 72.60 | 75.30 | 2.70 | 1.44 | 1.29 | 1181 |
| UIH0051 | Chiquilla Chica (C1) | 55.40 | 57.15 | 1.75 | 1.32 | 0.22 | 396 |
| UIH0055 | Chiquilla Chica (C1) | 103.60 | 107.50 | 3.90 | 1.84 | 0.63 | 353 |
| UIH0056 | Chiquilla Chica (C1) | 85.60 | 87.10 | 1.50 | 0.95 | 0.22 | 578 |
| UIH0057 | Chiquilla Chica (C1) | 38.99 | 39.90 | 0.91 | 0.61 | 0.20 | 460 |
| UIP0170 | Pampa Campamento | 193.00 | 194.00 | 1.00 | 0.28 | 5.70 | 141 |
| | Pampa Campamento (-20) | 163.45 | 166.89 | 3.44 | 0.92 | 2.41 | 32 |
| UIP0171 | Pampa Campamento | 134.99 | 136.59 | 1.60 | 0.32 | 1.65 | 89 |
| UIP0172 | Pampa Campamento | 286.26 | 286.56 | 0.30 | 0.20 | 2.30 | 126 |
| UIP0174 | Pampa Campamento | 351.13 | 352.10 | 0.97 | 0.52 | 9.50 | 664 |
| UIP0175 | Pampa Campamento | 230.55 | 231.70 | 1.15 | 0.77 | 3.48 | 26 |
| | Pampa Campamento | 205.40 | 205.73 | 0.33 | 0.20 | 5.30 | 525 |
| | Pampa Campamento (-35) | 184.95 | 186.15 | 1.20 | 0.65 | 15.33 | 297 |
| UIP0176 | Pampa Campamento | 389.88 | 390.25 | 0.37 | 0.32 | 26.50 | 42 |
| UIP0177 | Pampa Campamento | 291.53 | 293.60 | 2.07 | 1.05 | 18.89 | 746 |
| UIP0178 | Pampa Campamento | 213.94 | 215.49 | 1.55 | 0.52 | 9.50 | 420 |
| UIP0181 | Pampa Campamento | 487.57 | 489.46 | 1.89 | 0.99 | 1.01 | 16 |
| UIP0183 | Pampa Campamento | 437.43 | 438.69 | 1.26 | 0.72 | 4.56 | 34 |
| UIP0184 | Pampa Campamento | 489.60 | 490.70 | 1.10 | 0.68 | 5.60 | 34 |
| UIP0185 | P. Camp Diagonal sur | 70.63 | 72.00 | 1.37 | 0.91 | 1.04 | 42 |
| UIP0186 | P. Camp Diagonal sur | 85.24 | 85.80 | 0.56 | 0.44 | 0.53 | 21 |
| UIP0187 | P. Camp Diagonal sur | 99.00 | 99.47 | 0.47 | 0.37 | 0.08 | 21 |
| UIP0188 | P. Camp Diagonal sur | 110.60 | 111.25 | 0.65 | 0.49 | 0.28 | 4 |
| UIP0189 | P. Camp Diagonal sur | 134.70 | 135.52 | 0.82 | 0.76 | 16.13 | 258 |
| UIP0190 | P. Camp Diagonal sur | 88.60 | 89.36 | 0.76 | 0.48 | 0.61 | 21 |
| UIS0022 | Sorpresa | No vein encountered | | | | | |
| UIS0023 | Sorpresa | 199.30 | 200.90 | 1.60 | 1.30 | 4.29 | 133 |
| UIS0024 | Pampa Campamento Diagonal sur | 58.30 | 59.00 | 0.70 | 0.68 | 1.90 | 165 |
| | Sorpresa | 166.70 | 167.05 | 0.35 | 0.25 | 0.29 | 5 |
| UIS0025 | Sorpresa | 190.28 | 190.73 | 0.45 | 0.36 | 0.70 | 22 |
| UIS0026 | Sorpresa | 202.92 | 203.35 | 0.43 | 0.31 | 6.10 | 379 |
| UIS0027 | Sorpresa | No vein encountered | | | | | |
| UIS0028 | Pampa Campamento Diagonal sur | 60.38 | 62.19 | 1.81 | 1.71 | 10.65 | 186 |
| UIS0029 | Sorpresa | 199.90 | 200.46 | 0.56 | 0.45 | 2.00 | 44 |
| UIS0031 | Pampa Campamento Diagonal sur | 83.00 | 83.78 | 0.78 | 0.53 | 1.29 | 14 |

| Hole No. | Vein | From (m) | To (m) | Int. (m) | Est. True Width (m) | Au (g/t) | Ag (g/t) |
|----------|-----------|---------------------|--------|----------|---------------------|----------|----------|
| UIS0032 | Sorpresa | No vein encountered | | | | | |
| UIU0047 | La Paloma | 164.94 | 165.90 | 0.96 | 0.70 | 1.19 | 59 |
| UIU0048 | La Paloma | 174.75 | 175.30 | 0.55 | 0.38 | 7.00 | 82 |
| UIU0051 | La Paloma | 134.45 | 134.80 | 0.35 | 0.19 | 2.10 | 34 |
| UIU0052 | La Paloma | 114.69 | 116.50 | 1.81 | 1.31 | 10.88 | 26 |
| UIU0053 | La Paloma | 136.00 | 136.50 | 0.50 | 0.30 | 0.04 | 14 |
| UIV0068 | El Valle | No vein encountered | | | | | |
| UIV0070 | El Valle | 201.60 | 202.24 | 0.64 | 0.58 | 7.60 | 130 |
| UIV0072 | El Valle | 247.00 | 247.50 | 0.50 | 0.37 | 1.20 | 18 |
| UIV0077 | El Valle | 260.20 | 262.20 | 2.00 | 1.38 | 4.70 | 183 |
| UIV0078 | El Valle | 256.30 | 257.50 | 1.20 | 1.20 | 4.70 | 257 |
| UIV0079 | El Valle | 259.95 | 262.00 | 2.05 | 1.54 | 8.55 | 154 |
| UIV0080 | El Valle | 231.20 | 232.15 | 0.95 | 0.83 | 16.63 | 721 |
| UIV0081 | El Valle | 265.25 | 266.60 | 1.35 | 0.96 | 0.15 | 69 |
| UIV0082 | El Valle | 257.55 | 260.40 | 2.85 | 1.59 | 1.94 | 40 |
| UIV0083 | El Valle | 270.15 | 270.93 | 0.78 | 0.76 | 10.11 | 30 |
| UIV0085 | El Valle | 275.87 | 276.80 | 0.93 | 0.70 | 0.30 | 8 |

El Peñón: Plan View May – Oct 2024 Drilling Highlights

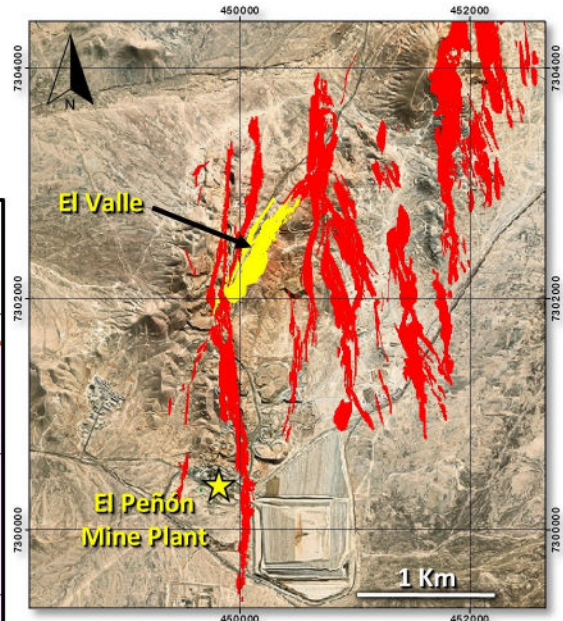
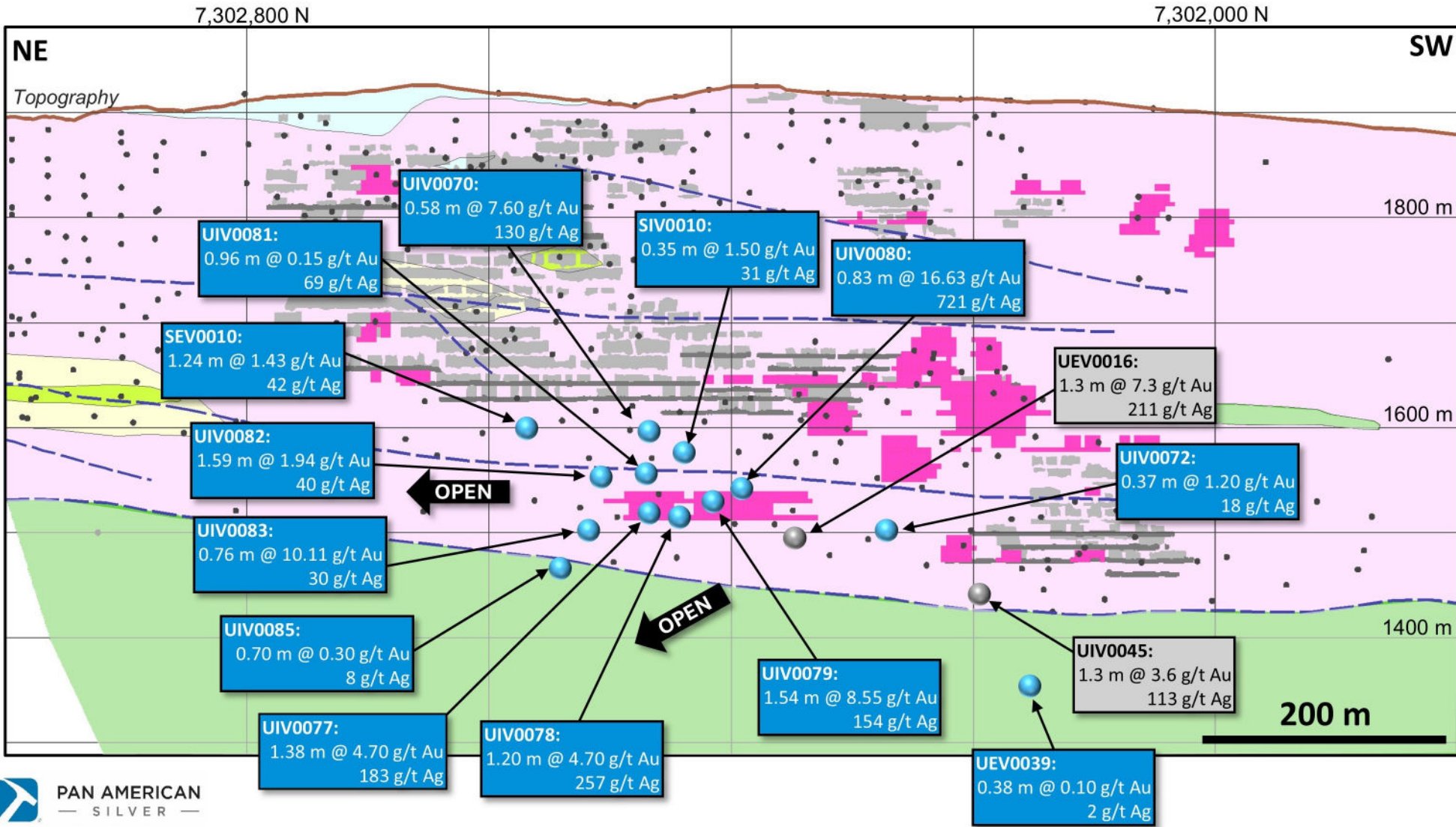


■ Mineralized Structures

- ★ **May - Oct 2024 Drilling Highlight**
Est. True Width & with Gold (g/t) and Silver (g/t)
- **Modeled Vein**
- Underground Infrastructure**
- **Drillhole Trace (Infill)**
- **Drillhole Trace (Exploration)**

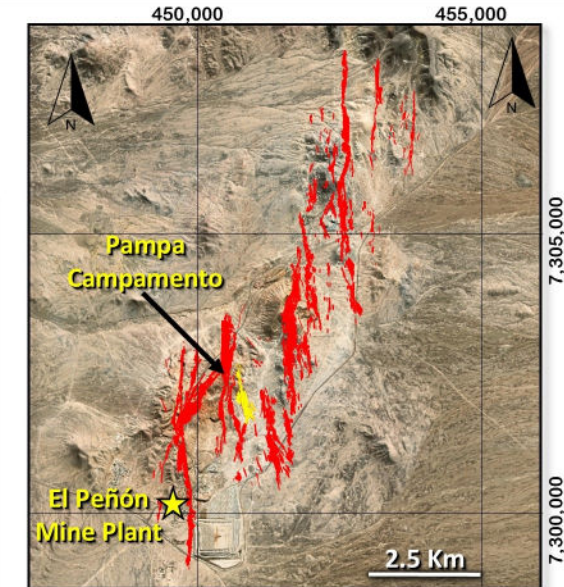
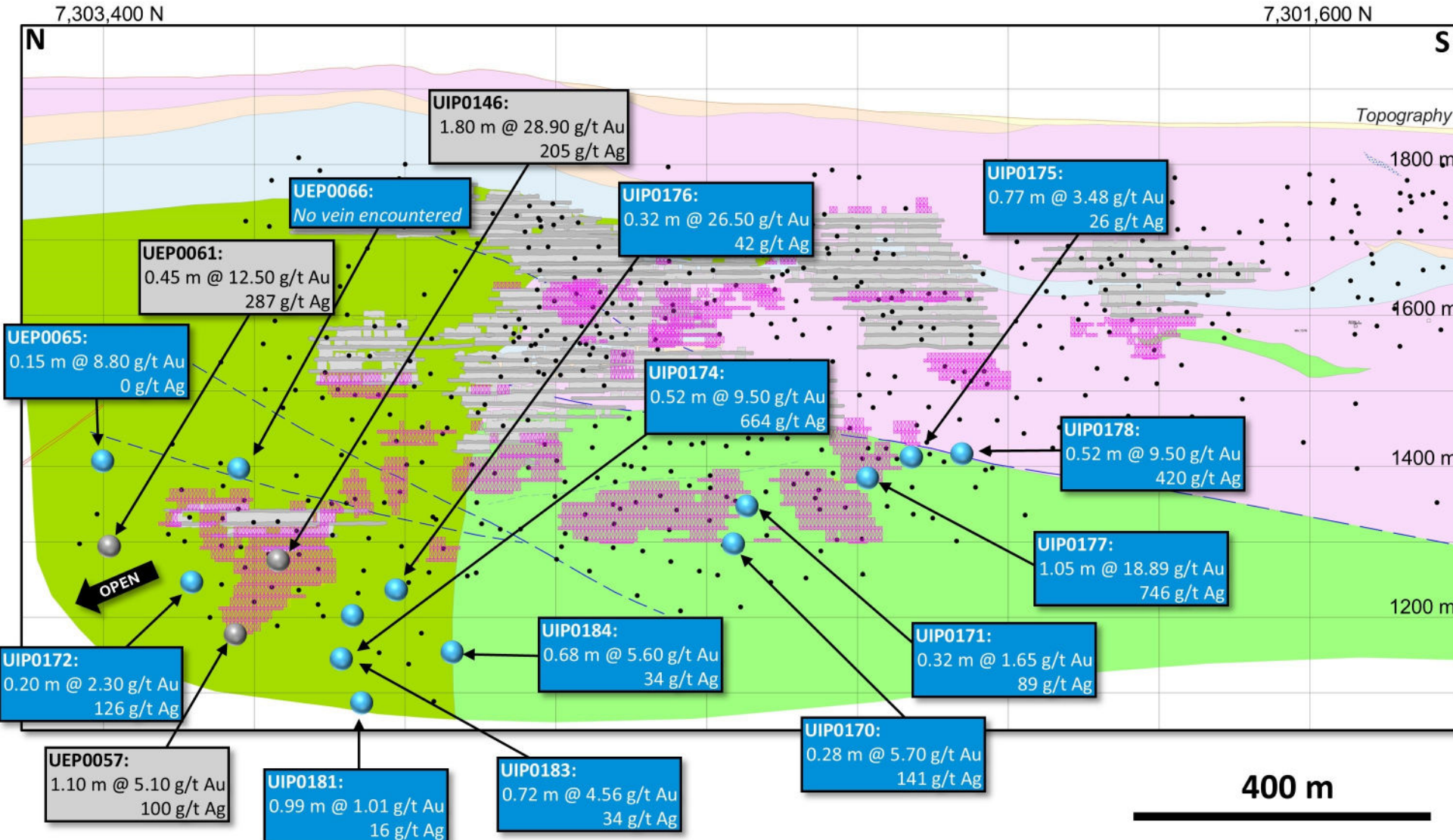
El Valle Longitudinal Section: May – Oct 2024 Drilling Highlights

(Looking Southeast)



- Mineralized Structures
 - **May to Oct 2024 Drill Intercepts**
Est. True Widths with: Gold (g/t), Silver (g/t)
 - Previously Reported Intercepts
 - Historic Drillhole Pierce Point
 - 2024 Mid-Year Reserves
 - Excavated Solids & Underground Drifts
 - - - Interpreted Fault
- Lithology:**
- | | |
|--|---|
| Aluvium | Lower Andesite |
| Spherulitic Rhyolite | Crystal Lithic Tuff |
| Rhyolite | |

Pampa Campamento Longitudinal Section: May – Oct 2024 Drilling Highlights (Looking East)

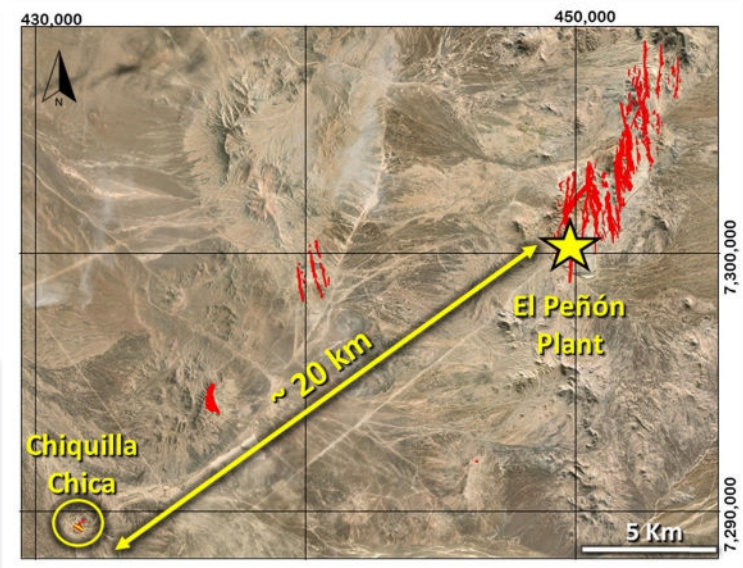
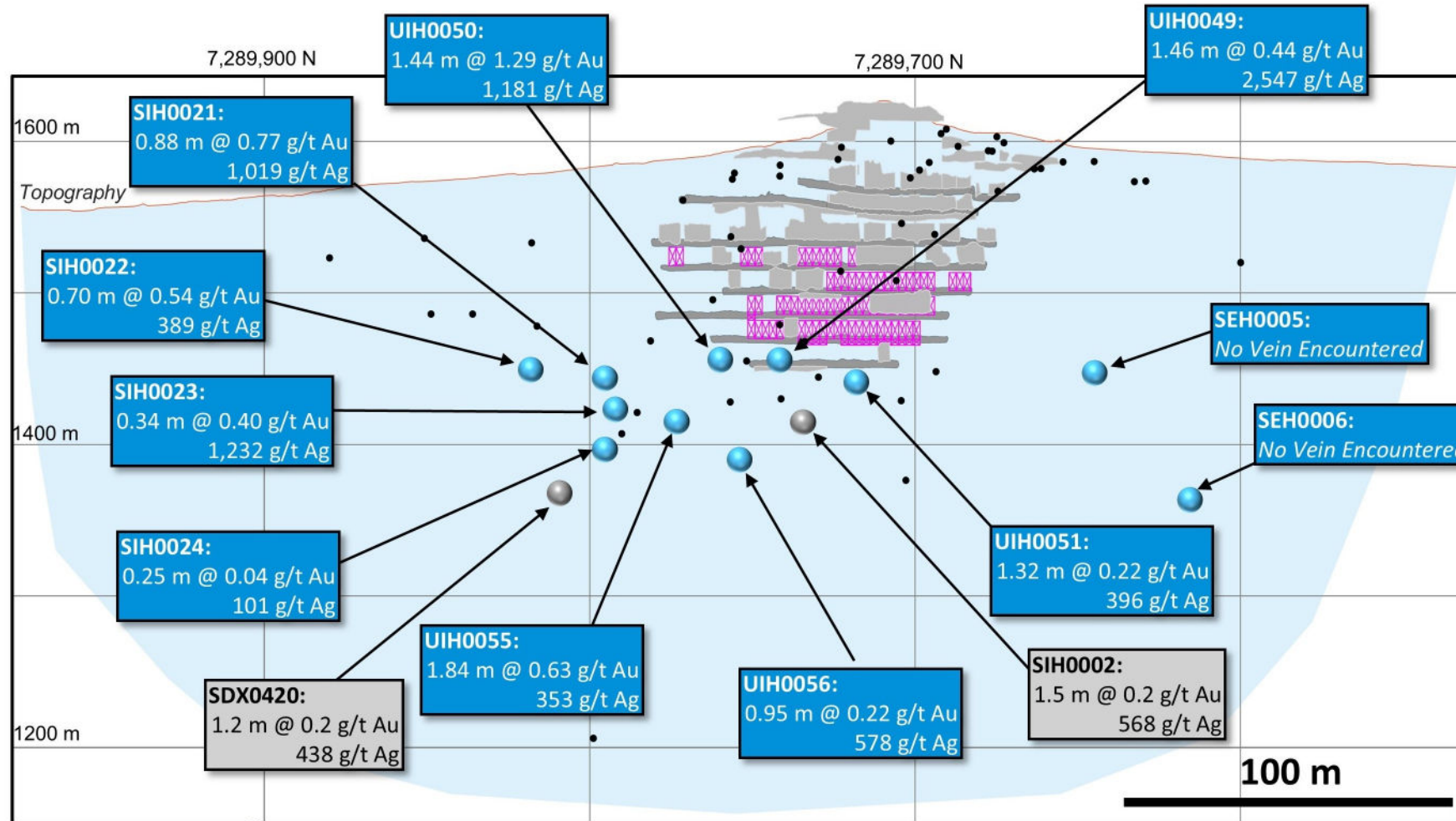


- Mineralized Structures
 - **May to Oct 2024 Drill Intercepts**
Est. True Widths with: Gold (g/t), Silver (g/t)
 - Previously Reported Intercepts
 - Historic Drillhole Pierce Point
 - ▨ 2024 Mid-Year Reserves
 - ▨ Excavated Solids & Underground Drifts
 - Interpreted Fault
- Lithology:**
- Aluvium
 - Lower Andesite
 - Spherulitic Rhyolite
 - Crystal Lithic Tuff
 - Rhyolite

400 m

Chiquilla Chica Longitudinal Section: May – Oct 2024 Drilling Highlights

(Looking ~ Northeast)



■ Mineralized Structures

● **May to Oct 2024 Drill Intercepts**
Est. True Widths with: Gold (g/t), Silver (g/t)

- Previously Reported Intercepts
- Historic Drillhole Pierce Point

▨ 2024 Mid-Year Reserves

▨ Excavated Solids & Underground Drifts

Lithology:
■ Crystal Lithic Tuff