

Huaron

As referenced in the news release dated June 17, 2024

Drill Hole Collar Table..... Page 1

Drill Hole Assay Composite TablePage 1

Cross Section and Plans..... Page 2

Huaron Drill Hole Collar Table

Hole No.	Zone	UTM E	UTM N	Elev. (masl)	Az (°)	Incl. (°)	Tot.length (m)
DDH-U-003-24	Huaron	344,884	8,781,540	4,507	238.2	20.5	313.6
DDH-U-007-24	Huaron	344,568	8,781,628	4,475	171.3	-55.5	440.2
DDH-U-009-24	Huaron	344,881	8,781,538	4,508	238.4	9.6	311.0
DDH-U-016-24	Huaron	344,883	8,781,541	4,507	223.0	21.4	291.3
DDH-U-018-24	Huaron	344,568	8,781,628	4,475	172.4	-62.8	459.3
DDH-U-020-24	Huaron	344,881	8,781,539	4,508	223.2	12.0	306.9
DDH-U-026-24	Huaron	344,568	8,781,628	4,475	159.4	-45.1	408.9
DDH-U-027-24	Huaron	344,881	8,781,539	4,508	204.8	22.1	248.8
DDH-U-030-24	Huaron	344,881	8,781,539	4,508	204.6	12.6	228.2
DDH-U-033-24	Huaron	344,881	8,781,538	4,507	204.6	0.5	186.3
DDH-U-035-24	Huaron	343,717	8,782,762	4,344	334.6	-18.0	174.2
DDH-U-036-24	Huaron	344,883	8,781,538	4,508	190.2	22.1	246.1
DDH-U-037-24	Huaron	344,567	8,781,629	4,476	195.4	-57.7	403.7
DDH-U-039-24	Huaron	343,350	8,782,850	4,141	187.6	4.5	404.6
DDH-U-040-24	Huaron	344,883	8,781,538	4,508	187.5	12.1	211.7
DDH-U-041-24	Huaron	343,717	8,782,763	4,343	318.8	-19.8	230.7
DDH-U-043-24	Huaron	344,568	8,781,628	4,476	159.3	-51.7	434.2
DDH-U-044-24	Huaron	344,885	8,781,537	4,508	173.0	18.7	268.6
DDH-U-045-24	Huaron	343,716	8,782,763	4,343	308.6	-14.9	215.0
DDH-U-047-24	Huaron	343,350	8,782,849	4,141	187.4	-8.2	335.8
DDH-U-048-24	Huaron	344,885	8,781,536	4,508	172.3	9.6	250.6
DDH-U-049-24	Huaron	344,567	8,781,629	4,476	191.5	-63.0	453.8
DDH-U-051-24	Huaron	343,717	8,782,762	4,344	299.7	-13.0	267.9
DDH-U-052-24	Huaron	344,885	8,781,537	4,508	172.8	1.0	381.5
DDH-U-055-24	Huaron	343,717	8,782,764	4,343	347.6	-20.2	199.1
DDH-U-057-24	Huaron	344,568	8,781,629	4,476	179.1	-57.2	459.6
DDH-U-085-23	Huaron	344,429	8,781,897	4,436	211.2	-19.6	459.3
DDH-U-091-23	Huaron	344,568	8,781,626	4,475	186.3	-52.7	376.8
DDH-U-096-23	Huaron	344,568	8,781,626	4,475	187.7	-60.8	447.5
DDH-U-056-24	Huaron	344,882	8,781,539	4,506	202.0	-52.9	75.0
DDH-U-060-24	Huaron	344,882	8,781,540	4,507	222.9	-81.4	127.2
DDH-U-061-24	Huaron	344,886	8,781,537	4,506	161.9	-48.0	81.2
DDH-U-062-24	Huaron	344,886	8,781,538	4,507	142.1	-76.3	122.2

Huaron Drill Hole Assay Composite Table

Hole No	Vein	Zone	From (m)	To (m)	Interval (m)	Est. True Width (m)	Ag g/t	Cu %	Pb %	Zn %
DDH-U-007-24	Cometa Ramal	Horizonte	357.15	358.40	1.25	0.99	289	0.13	4.74	5.82
DDH-U-018-24	Cometa Ramal	Horizonte	431.55	440.20	8.65	4.00	333	0.49	5.50	20.44

DDH-U-026-24	Cometa Ramal	Horizonte	362.30	363.65	0.70	0.97	33	0.02	0.33	0.33
DDH-U-037-24	Cometa Ramal	Horizonte	370.95	373.05	2.10	1.52	81	0.10	1.31	2.21
DDH-U-043-24	Cometa Ramal	Horizonte	406.65	408.90	2.25	1.50	250	0.22	3.67	6.43
DDH-U-049-24	Cometa Ramal	Horizonte	435.45	438.85	3.40	2.32	627	0.79	3.36	17.77
DDH-U-052-24	Cometa Ramal	Horizonte	301.40	302.25	0.85	0.70	28	0.02	0.28	0.54
DDH-U-057-24	Cometa Ramal	Horizonte	385.70	387.95	2.05	1.50	282	0.40	3.20	8.84
DDH-U-085-23	Cometa Ramal	Horizonte	430.70	435.35	4.65	1.50	528	0.33	4.01	7.47
DDH-U-091-23	Cometa Ramal	Horizonte	346.55	348.70	2.15	1.64	272	0.08	3.32	2.00
DDH-U-096-23	Cometa Ramal	Horizonte	397.00	402.05	5.05	3.64	85	0.05	1.43	3.51
DDH-U-047-24	Patrick	Middle	188.50	196.80	8.30	5.46	331	0.20	1.32	3.58
DDH-U-035-24	Patrick	Middle	136.80	142.80	6.00	5.92	234	0.13	1.04	4.12
DDH-U-041-24	Patrick	Middle	140.70	142.45	1.75	1.66	819	0.35	11.53	14.48
DDH-U-039-24	Patrick	Middle	180.30	182.05	1.75	1.71	337	0.23	1.50	2.10
DDH-U-045-24	Patrick	Middle	157.85	161.35	3.50	3.06	179	0.08	3.39	5.37
DDH-U-055-24	Patrick	Middle	140.70	143.30	2.60	2.52	107	0.03	1.84	5.49
DDH-U-051-24	Patrick	Middle	184.70	186.70	2.00	1.55	156	0.03	1.20	3.06
DDH-U-033-24	Labor Este	Horizonte	158.40	162.60	4.20	3.87	147	0.03	3.19	3.86
DDH-U-027-24	Labor Este	Horizonte	227.10	229.35	2.25	1.68	332	0.03	6.77	6.78
DDH-U-036-24	Labor Este	Horizonte	216.15	220.05	3.90	2.65	126	0.03	1.66	1.12
DDH-U-048-24	Labor Este	Horizonte	190.90	192.90	2.00	0.96	266	0.08	5.47	14.94
DDH-U-020-24	Labor Este	Horizonte	214.00	215.75	1.75	1.09	205	0.05	6.19	3.82
DDH-U-040-24	Labor Este	Horizonte	184.10	186.55	2.45	1.70	123	0.06	3.06	5.98
DDH-U-016-24	Labor Este	Horizonte	254.60	255.05	0.45	0.18	627	0.11	9.44	3.39
DDH-U-003-24	Labor Este	Horizonte	259.70	260.80	1.10	0.66	144	0.06	3.92	4.60
DDH-U-030-24	Labor Este	Horizonte	190.95	192.65	1.70	1.40	47	0.03	1.65	1.43
DDH-U-044-24	Labor Este	Horizonte	237.80	238.20	0.40	0.20	288	0.10	2.75	4.29
DDH-U-009-24	Labor Este	Horizonte	230.00	230.35	0.35	0.23	181	0.16	7.52	9.01
DDH-U-052-24	Labor Este	Horizonte	179.15	181.50	2.35	1.26	32	0.02	0.53	0.38
DDH-U-016-24	Cuerpo Andres	Horizonte	75.30	77.00	1.70	1.49	233	0.14	3.59	6.92
DDH-U-020-24	Cuerpo Andres	Horizonte	69.40	71.25	1.85	1.78	194	0.03	3.11	8.58
DDH-U-056-24	Cuerpo Andres	Horizonte	48.35	53.00	4.65	3.90	162	0.04	4.02	6.06
DDH-U-060-24	Cuerpo Andres	Horizonte	85.00	87.85	2.85	1.45	231	0.08	2.44	4.38
DDH-U-061-24	Cuerpo Andres	Horizonte	48.45	49.75	1.30	1.06	241	0.08	4.19	8.75
DDH-U-062-24	Cuerpo Andres	Horizonte	81.50	83.20	1.70	0.86	756	0.22	8.28	9.61

Huaron Cross Section and Plans

Huaron: Drilling Nov 2023-April 2024

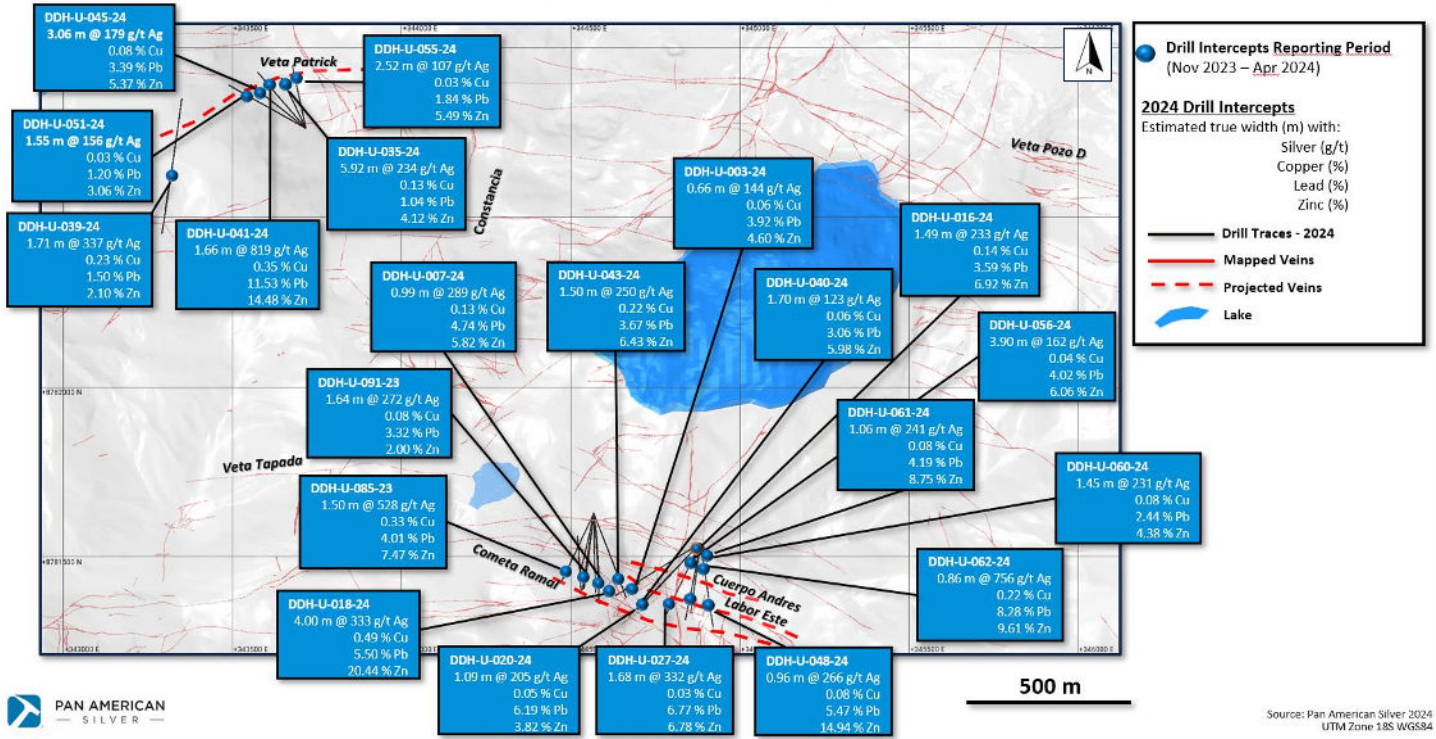


Figure 1. Huaron – Drilling Nov 2023 – April 2024

Huaron - Geology & Exploration Highlights: Labor Este Vein

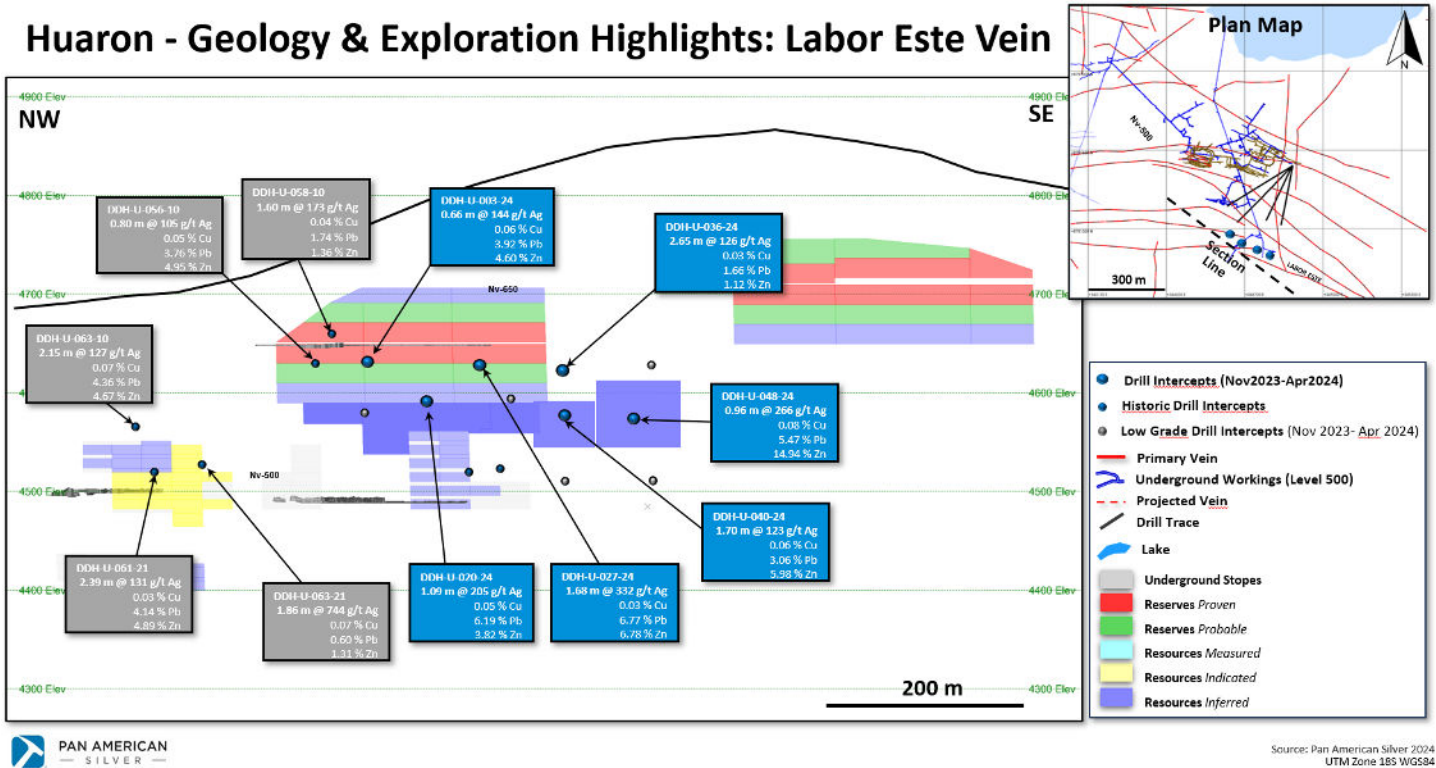


Figure 2. Huaron – Geology & Exploration Highlights: Labor Este Vein

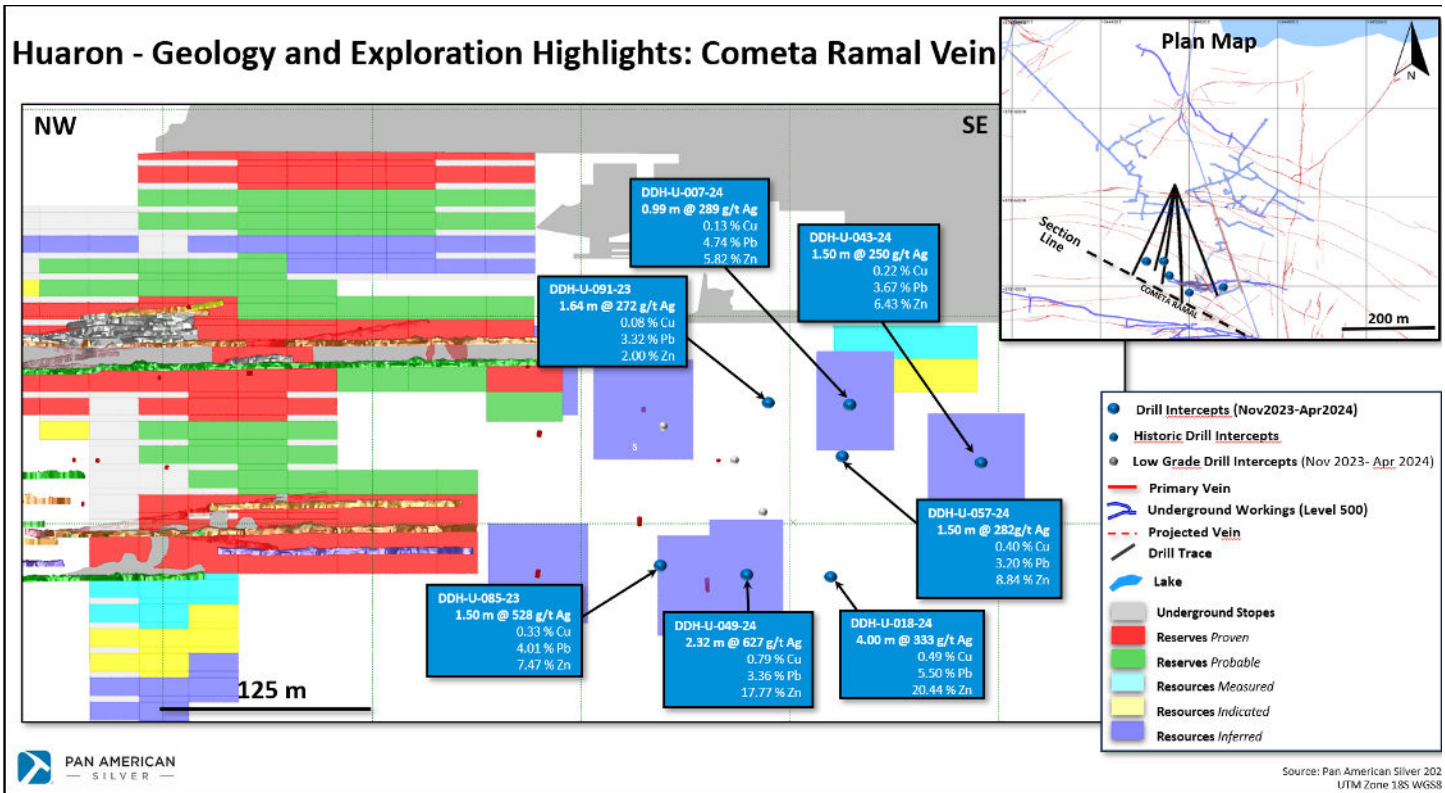


Figure 3. Huaron – Geology & Exploration Highlights: Cometa Ramal Vein

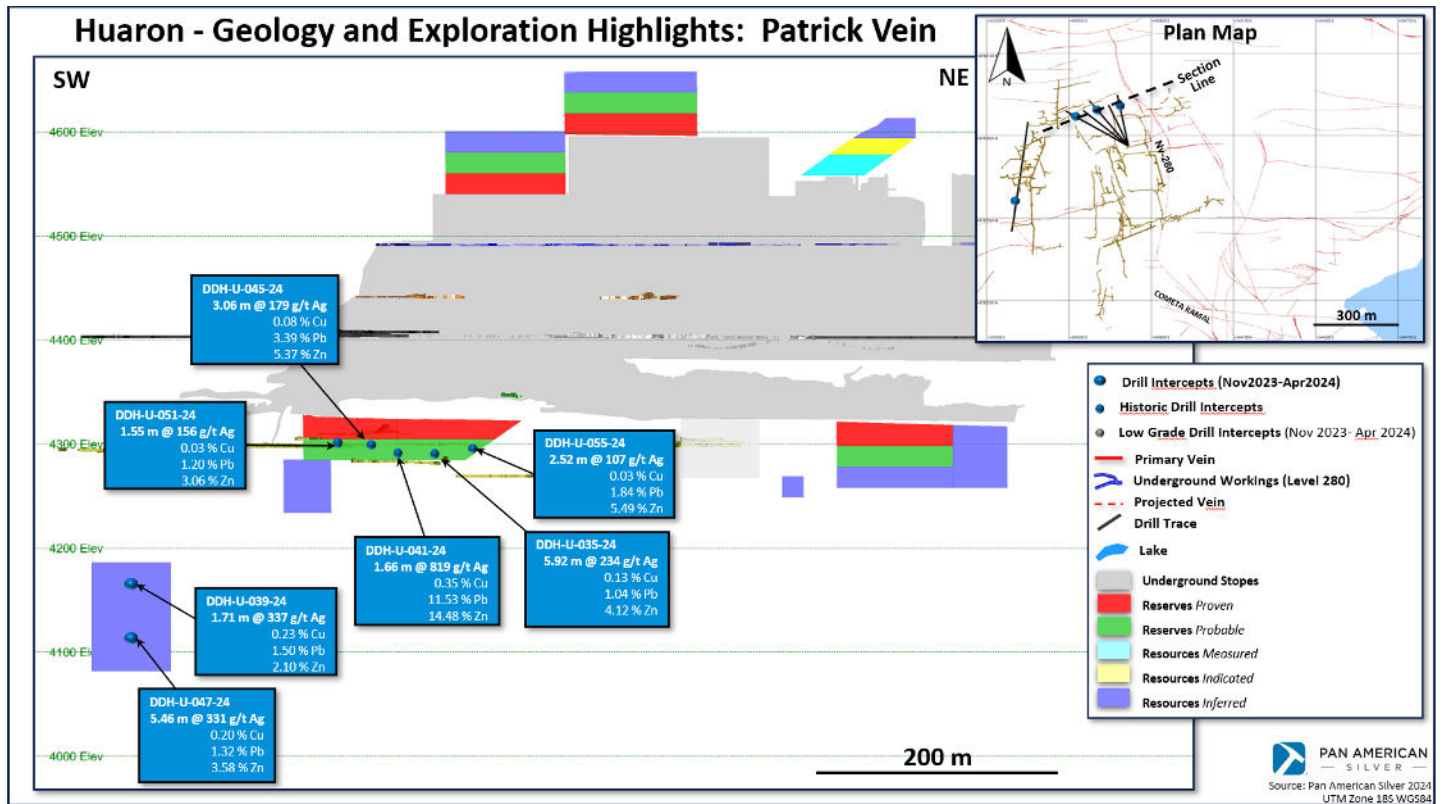
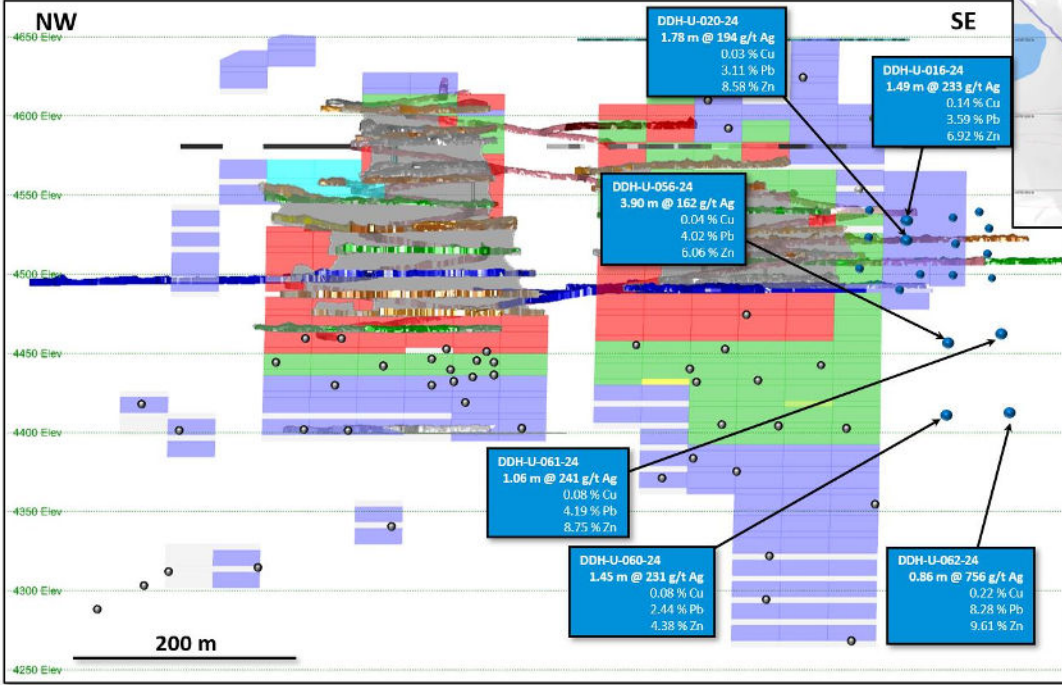
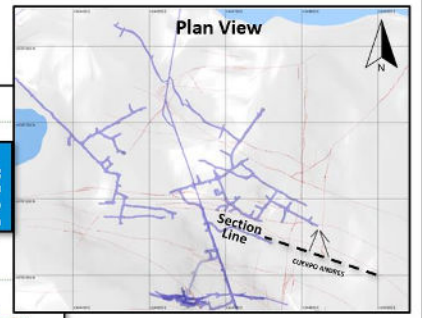


Figure 4. Huaron - Geology & Exploration Highlights: Patrick Vein

Huaron - Geology and Exploration Highlights: Cuerpo Andres



Legend

- Drill Intercepts (Nov2023-Apr2024)
- Historic Drill Intercepts
- Low Grade Drill Intercepts (Nov 2023- Apr. 2024)
- Primary Vein
- Underground Workings (NV 500)
- Projected Vein
- Drill Trace
- Lake
- Underground Stopes
- Reserves Proven
- Reserves Probable
- Reserves Measured
- Reserves Indicated
- Reserves Inferred

DDH-U-020-24
 1.78 m @ 194 g/t Ag
 0.03 % Cu
 3.11 % Pb
 8.58 % Zn

DDH-U-016-24
 1.49 m @ 233 g/t Ag
 0.14 % Cu
 3.59 % Pb
 6.92 % Zn

DDH-U-056-24
 3.90 m @ 162 g/t Ag
 0.04 % Cu
 4.02 % Pb
 6.06 % Zn

DDH-U-061-24
 1.06 m @ 241 g/t Ag
 0.08 % Cu
 4.19 % Pb
 8.75 % Zn

DDH-U-060-24
 1.45 m @ 231 g/t Ag
 0.08 % Cu
 2.44 % Pb
 4.38 % Zn

DDH-U-062-24
 0.86 m @ 756 g/t Ag
 0.22 % Cu
 8.28 % Pb
 9.61 % Zn

PAN AMERICAN
 SILVER
 Source: Pan American Silver 2024
 UTM Zone 18S WGS84

Figure 5. Huaron - Geology & Exploration Highlights: Cuerpo Andres