

## Timmins Mine

**Drill Hole Collar Table.....Page 1**

*(coordinates in the UTM Zone 17N NAD27)*

**Drill Hole Assay Composite Table..... Page 3**

**Cross Section and Plans.....Page 8**

### Timmins Mine Drill Hole Collar Table

Hole No.	Zone	UTME	UTMN	Elev (masl)	Az (°)	Incl. (°)	TD (m)
TW23-727	Broulan Reef	487,315.2	5,372,854.1	291.1	333	-64	633
TW23-728	Broulan Reef	487,386.3	5,372,858.9	290.7	337	-58	555
TW23-729	Broulan Reef	487,548.9	5,372,881.1	289.1	335	-55	93
TW23-730	Broulan Reef	487,549.0	5,372,880.5	289.0	335	-55	546
TW23-731	Broulan Reef	486,911.8	5,372,961.3	292.6	335	-57	192
TW23-732	Broulan Reef	486,973.7	5,373,020.3	293.1	335	-65	149
TW23-733	Broulan Reef	487,072.5	5,372,975.4	294.2	335	-63	234
TW23-734	Broulan Reef	486,939.5	5,373,025.2	292.6	335	-48	144
TW23-735	Broulan Reef	486,978.3	5,373,078.9	292.5	335	-55	141
TW23-736	Broulan Reef	486,928.2	5,373,091.1	292.6	335	-62	102
TW23-737	Broulan Reef	486,864.0	5,373,063.5	292.2	335	-60	75
TW23-738	Broulan Reef	487,034.0	5,373,057.0	292.4	335	-48	90
TW23-739	Broulan Reef	487,034.1	5,373,056.5	292.3	335	-69	108
TW23-740	Broulan Reef	487,043.1	5,373,060.0	292.3	335	-55	141
TW23-741	Broulan Reef	487,050.1	5,373,071.1	292.3	335	-48	78
TW23-742	Broulan Reef	487,131.9	5,373,062.3	291.8	335	-60	87
TW23-743	Broulan Reef	487,166.6	5,373,032.7	291.6	335	-45	136
TW23-744	Broulan Reef	487,167.7	5,373,032.7	291.7	335	-56	192
TW23-745	Broulan Reef	487,166.9	5,373,032.2	291.7	335	-66	231
TW23-746	Broulan Reef	487,182.2	5,373,019.5	291.7	335	-57	150
TW23-747	Broulan Reef	487,219.4	5,373,015.1	291.6	335	-50	231
TW22-688	Hallnor	488,959.0	5,373,529.0	284.0	335	-50	90
TW22-689	Hallnor	488,968.0	5,373,507.0	284.0	335	-45	106
TW22-690	Hallnor	488,974.0	5,373,489.0	284.0	335	-45	132
TW22-691	Hallnor	488,984.0	5,373,469.0	284.0	335	-45	150
TW22-692	Hallnor	489,043.0	5,373,545.0	284.0	335	-45	120
TW22-693	Hallnor	489,049.0	5,373,528.0	284.0	335	-45	141

Hole No.	Zone	UTME	UTMN	Elev (masl)	Az (°)	Incl. (°)	TD (m)
TW22-694	Hallnor	489,063.0	5,373,543.0	284.0	335	-45	138
TW22-695	Hallnor	489,094.0	5,373,536.0	285.0	335	-48	162
TW22-696	Hallnor	489,098.0	5,373,525.0	285.0	335	-59	222
TW22-697	Hallnor	489,098.0	5,373,525.0	285.0	335	-50	180
TW22-698	Hallnor	489,118.0	5,373,536.0	286.0	335	-45	192
TW22-699	Hallnor	489,124.0	5,373,542.0	286.0	335	-53	192
TW22-700	Hallnor	489,143.0	5,373,548.0	286.0	334	-59	160
TW22-701	Hallnor	489,185.0	5,373,558.0	287.0	335	-53	210
TW22-702	Hallnor	489,185.0	5,373,558.0	287.0	333	-61	231
TW22-703	Hallnor	489,176.0	5,373,525.0	287.0	333	-51	180
TW22-704	Hallnor	489,176.0	5,373,525.0	287.0	333	-58	240
TW22-705A	Hallnor	489,176.0	5,373,525.0	287.0	333	-53	240
TW22-706A	Hallnor	489,160.0	5,373,488.0	287.0	333	-57	270
TW22-707	Hallnor	489,082.0	5,373,513.0	285.0	333	-56	201
TW22-708	Hallnor	489,056.0	5,373,498.0	285.0	333	-56	171
TW22-709	Hallnor	489,061.0	5,373,463.0	285.0	333	-53	210
TW22-710	Hallnor	489,030.0	5,373,485.0	285.0	333	-53	180
TW22-711	Hallnor	488,951.0	5,373,462.0	284.0	333	-49	117
TW22-712	Hallnor	488,951.0	5,373,462.0	284.0	333	-62	141
TW22-713	Hallnor	488,931.0	5,373,458.0	284.0	333	-46	102
TW22-714	Hallnor	488,931.0	5,373,458.0	284.0	333	-60	141
TW22-715	Hallnor	488,902.0	5,373,426.0	285.0	333	-57	141
TW22-716	Hallnor	488,909.0	5,373,459.0	285.0	333	-49	102
TW22-717	Hallnor	488,909.0	5,373,459.0	285.0	333	-59	102
TW22-718	Hallnor	488,926.0	5,373,432.0	284.0	333	-55	156
TW22-719	Hallnor	488,893.0	5,373,455.0	285.0	333	-59	117
TW22-720	Hallnor	488,833.0	5,373,504.0	287.0	153	-47	96
TW22-721	Hallnor	488,824.0	5,373,522.0	287.0	152	-48	120
TW22-722	Hallnor	488,815.0	5,373,540.0	287.0	151	-50	171
TW22-723	Hallnor	489,470.0	5,374,008.0	300.0	151	-62	519
TW22-724	Hallnor	489,414.0	5,374,075.0	295.0	150	-54	552
TW22-725	Hallnor	489,414.0	5,374,075.0	295.0	152	-58	525
TW22-726	Hallnor	489,414.0	5,374,075.0	295.0	157	-52	525

**Timmins Mine Drill Hole Assay Composite Table**

Hole No.	Zone	From (m)	To (m)	Int. (m)	Au (g/t)
TW23-727	Broulan Reef	476.0	476.5	0.5	1.31
TW23-728	Broulan Reef	439.5	440.0	0.5	2.30
		444.5	445.0	0.5	1.39
TW23-729	Broulan Reef	NSV			
TW23-730	Broulan Reef Incl.	475.0	478.0	3.0	4.71
		477.0	478.0	1.0	11.40
		496.0	497.0	1.0	3.62
TW23-731	Broulan Reef	150.0	156.0	6.0	3.46
TW23-732	Broulan Reef	128.0	129.0	1.0	1.32
TW23-733	Broulan Reef	167.0	178.0	11.0	0.89
		197.0	204.0	7.0	0.62
TW23-734	Broulan Reef	85.0	89.0	4.0	3.29
TW23-735	Broulan Reef	38.0	39.0	1.0	3.36
		75.0	80.0	5.0	2.11
		86.8	90.0	3.2	2.27
TW23-736	Broulan Reef	54.6	61.0	6.4	1.46
		63.0	64.0	1.0	3.00
TW23-737	Broulan Reef	50.0	51.2	1.2	6.42
		67.0	68.0	1.0	2.35
TW23-738	Broulan Reef	83.0	84.0	1.0	1.30
TW23-739	Broulan Reef	81.0	84.7	3.7	0.99
TW23-740	Broulan Reef  Incl.  Incl.	91.0	92.0	1.0	6.34
		98.0	100.6	2.6	5.77
		100.0	100.6	0.6	24.20
		104.0	112.0	8.0	6.39
		105.0	106.0	1.0	38.50
TW23-741	Broulan Reef	NSV			
TW23-742	Broulan Reef	NSV			
TW23-743	Broulan Reef	120.0	129.0	9.0	3.45
		125.0	126.0	1.0	28.60
TW23-744	Broulan Reef	132.5	134.0	1.5	5.24
TW23-745	Broulan Reef Incl.	167.0	176.0	9.0	6.38
		175.0	176.0	1.0	45.10
		183.0	184.0	1.0	3.28
TW23-746	Broulan Reef	145.0	146.0	1.0	5.42
TW23-747	Broulan Reef	177.0	184.0	7.0	2.90

		Incl.	179.0	180.0	1.0	10.90
			199.0	209.0	10.0	38.11
		Incl.	201.0	202.0	1.0	190.00
		and	203.0	204.0	1.0	12.10
		and	206.0	207.0	1.0	170.00
TW22-688	Hallnor		45.9	46.4	0.5	27.30
			67.0	69.0	2.0	1.70
			72.0	73.0	1.0	15.00
TW22-689	Hallnor		67.0	68.0	1.0	6.00
			70.5	73.5	3.0	1.40
			85.9	87.4	1.5	3.33
TW22-690	Hallnor		87.0	91.0	4.0	2.98
			95.5	108.5	13.0	3.68
TW22-691	Hallnor		94.0	94.5	0.5	5.57
			117.0	118.7	1.7	38.86
		Incl.	118.0	118.7	0.7	91.20
			131.5	133.5	2.0	3.47
TW22-692	Hallnor		88.2	91.2	3.0	1.65
			95.2	97.2	2.0	2.71
TW22-693	Hallnor		106.0	108.5	2.5	1.02
			112.2	114.0	1.8	6.28
TW22-694	Hallnor		108.4	113.0	4.6	10.43
		Incl.	110.0	110.5	0.5	48.60
		and	112.0	113.0	1.0	19.30
			113.0	115.0	2.0	2.16
TW22-695	Hallnor		125.0	131.3	6.3	1.13
			134.0	143.2	9.2	1.06
TW22-696	Hallnor		110.0	112.2	3.0	8.76
			166.5	168.4	1.9	0.32
			197.0	198.0	1.0	22.20
TW22-697	Hallnor		94.0	95.4	3.0	6.81
			141.0	147.5	6.5	1.94
			158.5	162.0	3.5	1.02
TW22-698	Hallnor		124.0	126.0	2.0	5.45
			134.0	140.6	6.6	1.47
			146.2	150.0	3.8	5.65
			159.0	161.0	2.0	6.05
TW22-699	Hallnor		93.5	96.5	3.0	3.30
			139.0	155.0	16.0	1.11
			155.0	159.0	4.0	15.08

	Incl.	158.5	159.0	0.5	102.00
TW22-700	Hallnor	118.9	119.4	0.5	3.87
TW22-701	Hallnor	118.0	121.0	3.0	1.48
		130.0	131.0	1.0	3.33
		157.0	158.1	1.1	5.83
TW22-702	Hallnor Incl.	165.0	167.0	2.0	18.51
		166.0	166.5	0.5	70.50
		183.0	187.0	4.0	3.27
		202.0	205.0	3.0	2.09
TW22-703	Hallnor	137.0	137.5	0.5	5.33
		169.5	175.5	6.0	0.29
TW22-704	Hallnor Incl.	25.0	31.5	6.5	1.15
		27.9	28.4	0.5	10.40
		33.0	36.5	3.5	3.02
		157.5	159.0	1.5	4.61
		204.7	210.5	5.8	0.29
		212.2	213.7	1.5	4.19
		224.3	226.0	1.7	2.40
TW22-705A	Hallnor	35.2	37.8	2.6	3.56
		180.5	181.5	1.0	7.58
		184.0	200.6	16.6	5.39
		205.8	217.5	11.7	0.91
		219.5	223.5	4.0	1.23
TW22-706A	Hallnor	165.6	171.1	5.5	2.17
		219.6	220.1	0.5	3.44
		236.9	237.3	0.4	3.61
TW22-707	Hallnor	107.7	108.3	0.6	5.00
		150.6	158.8	8.2	1.77
		161.7	162.7	1.0	8.82
		166.6	167.3	0.7	4.14
		169.7	172.0	2.3	3.43
TW22-708	Hallnor	31.8	33.9	2.1	2.23
		43.8	48.2	4.4	1.18
		107.0	111.7	4.7	0.60
		138.2	144.0	5.8	3.89
		149.0	149.5	0.5	1.38
TW22-709	Hallnor	138.5	146.5	8.0	6.76
		177.0	178.5	1.5	2.55
		187.5	189.5	2.0	2.42
		197.0	200.0	3.0	2.42
TW22-710	Hallnor	33.0	42.5	9.5	1.32

		113.1	114.0	0.9	5.09
		133.0	139.7	6.7	0.00
		153.0	155.0	2.0	1.48
		166.0	169.0	3.0	6.89
TW22-711	Hallnor	75.0	76.1	1.1	7.63
		90.0	93.0	3.0	4.63
		105.5	108.0	2.5	3.91
TW22-712	Hallnor	114.6	120.4	5.8	26.64
	Incl.	118.1	118.6	0.5	265.00
		131.5	134.6	3.1	9.97
TW22-713	Hallnor	29.0	39.0	10.0	1.40
		73.5	79.4	5.9	0.59
TW22-714	Hallnor	62.0	67.4	5.4	4.28
		82.5	84.9	2.4	2.29
		99.9	100.6	0.7	27.60
		108.5	112.5	4.0	4.56
TW22-715	Hallnor	93.0	99.0	6.0	1.55
		100.7	113.5	12.8	4.37
TW22-716	Hallnor	36.0	38.5	2.5	17.74
		81.0	82.5	1.5	6.82
TW22-717	Hallnor	40.0	42.2	2.2	3.15
		81.0	83.2	2.2	2.08
		90.0	94.3	4.3	1.55
TW22-718	Hallnor	99.8	100.3	0.5	3.91
		129.0	131.1	2.1	12.72
		135.0	138.3	3.3	1.99
TW22-719	Hallnor	84.0	85.2	1.2	145.73
		88.1	91.0	2.9	11.79
TW22-720	Hallnor	69.8	70.4	0.6	4.89
		79.8	80.5	0.7	3.53
TW22-721	Hallnor	78.0	82.3	4.3	1.18
		90.0	91.0	1.0	2.85
TW22-722	Hallnor	74.8	76.8	2.0	3.32
		103.6	107.5	3.9	2.36
		155.3	171.0	15.7	2.53
	Incl.	161.5	167.4	5.9	4.44
TW22-723	Hallnor	439.7	443.1	3.4	1.07
		464.9	466.2	1.3	8.60
TW22-724	Hallnor	499.0	501.5	2.5	2.46
		514.5	520.6	6.1	4.46
TW22-725	Hallnor	453.6	458.7	5.1	0.50

		462.7	466.2	3.5	5.65
		469.5	478.3	8.8	1.82
		485.8	495.1	9.3	2.08
TW22-726	Hallnor	457.0	460.1	3.1	2.21
		465.8	466.6	0.8	5.46
		503.7	505.7	2.0	3.65

Timmins Mine Cross Section and Plans

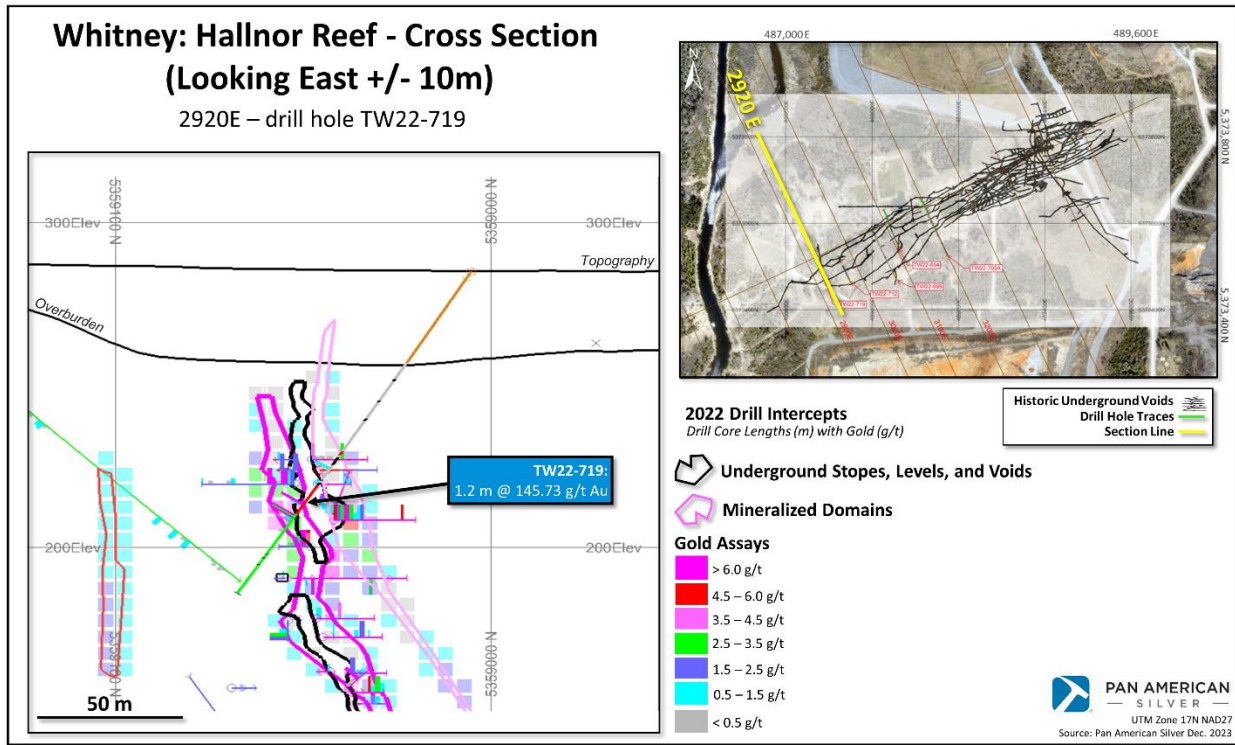


Figure 1. Timmins – Whitney: Hallnor X Sect 2920E

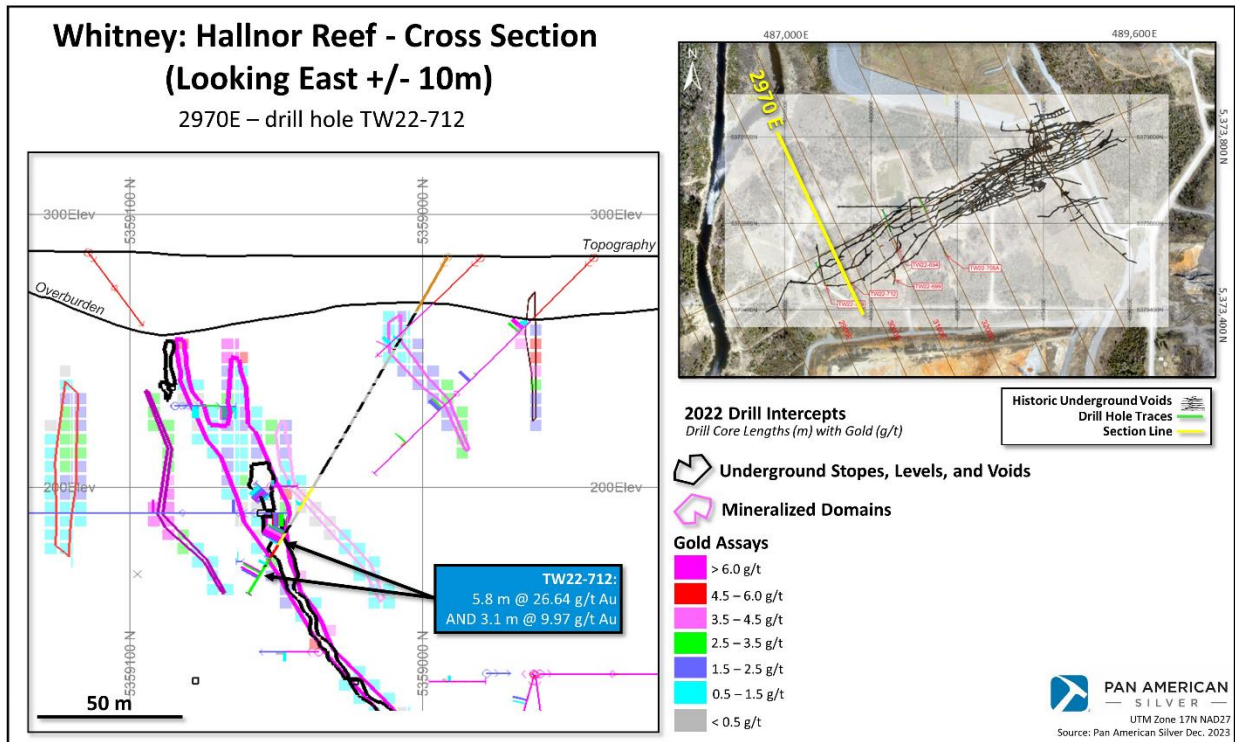


Figure 2. Timmins – Whitney: Hallnor X Sect 2970E



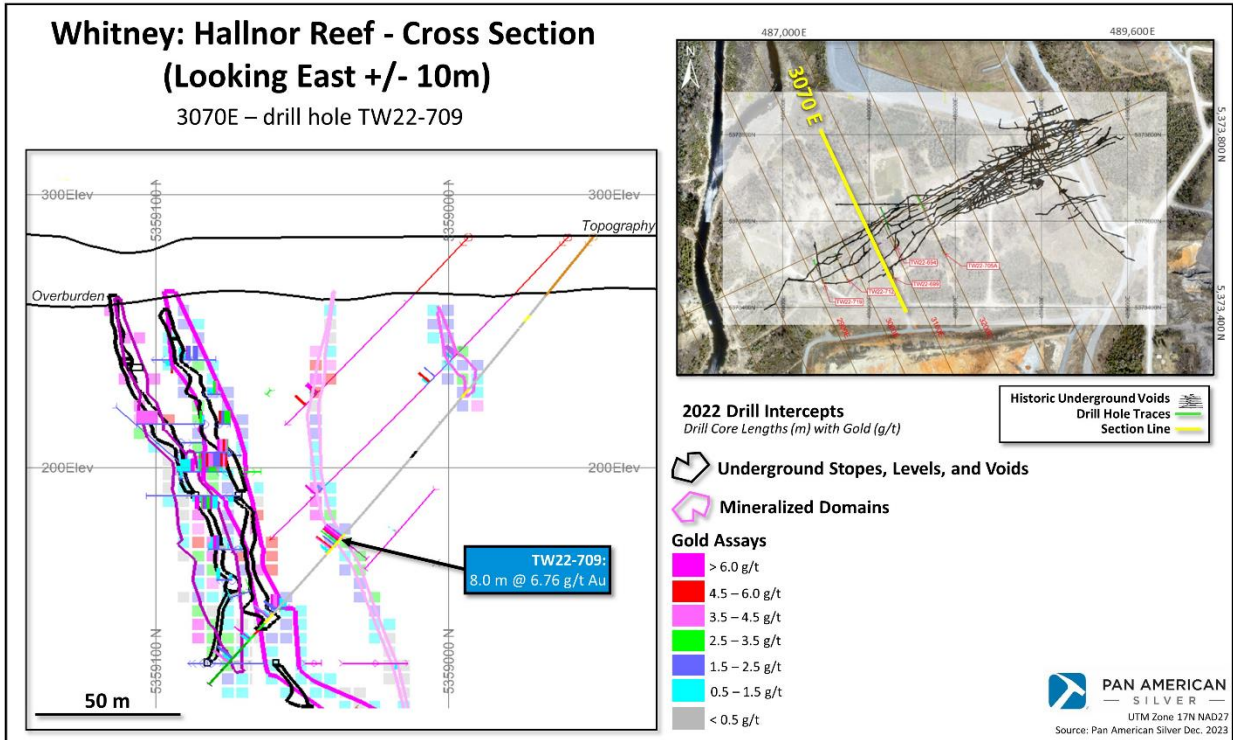


Figure 3. Timmins – Whitney: Hallnor X Sect 3070E

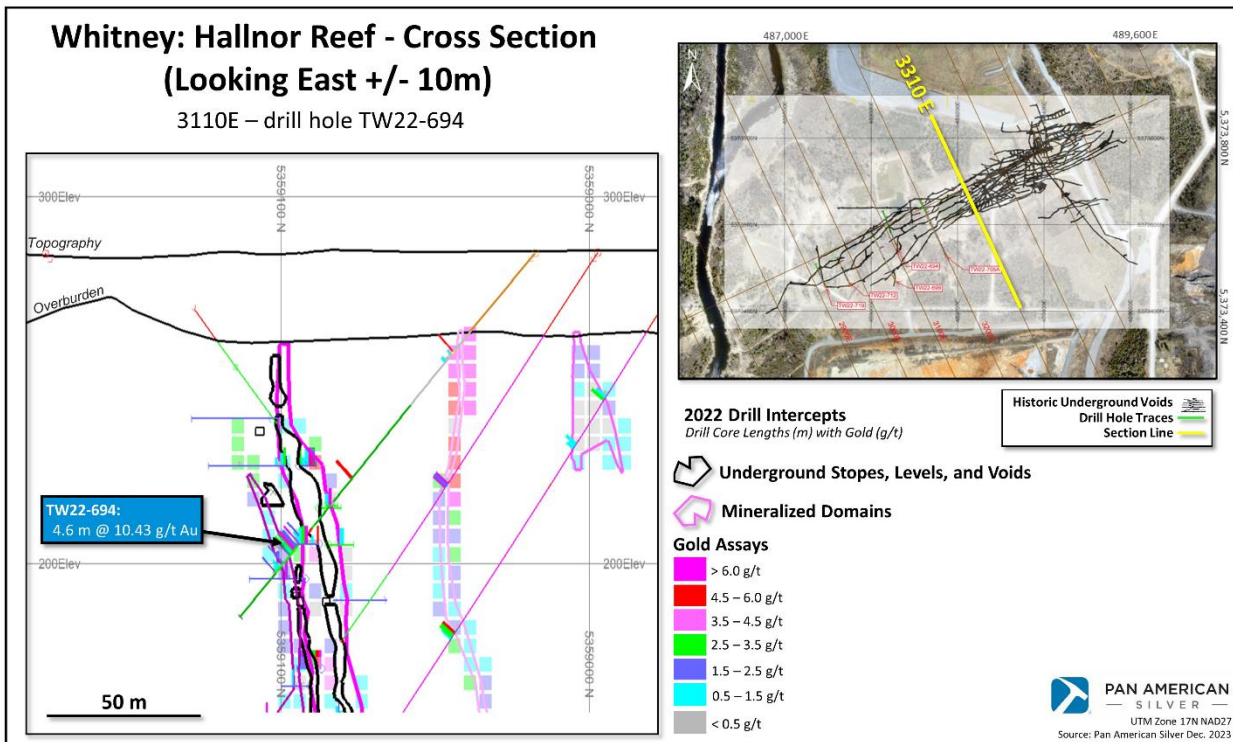


Figure 4. Timmins – Whitney: Hallnor X Sect 3110E

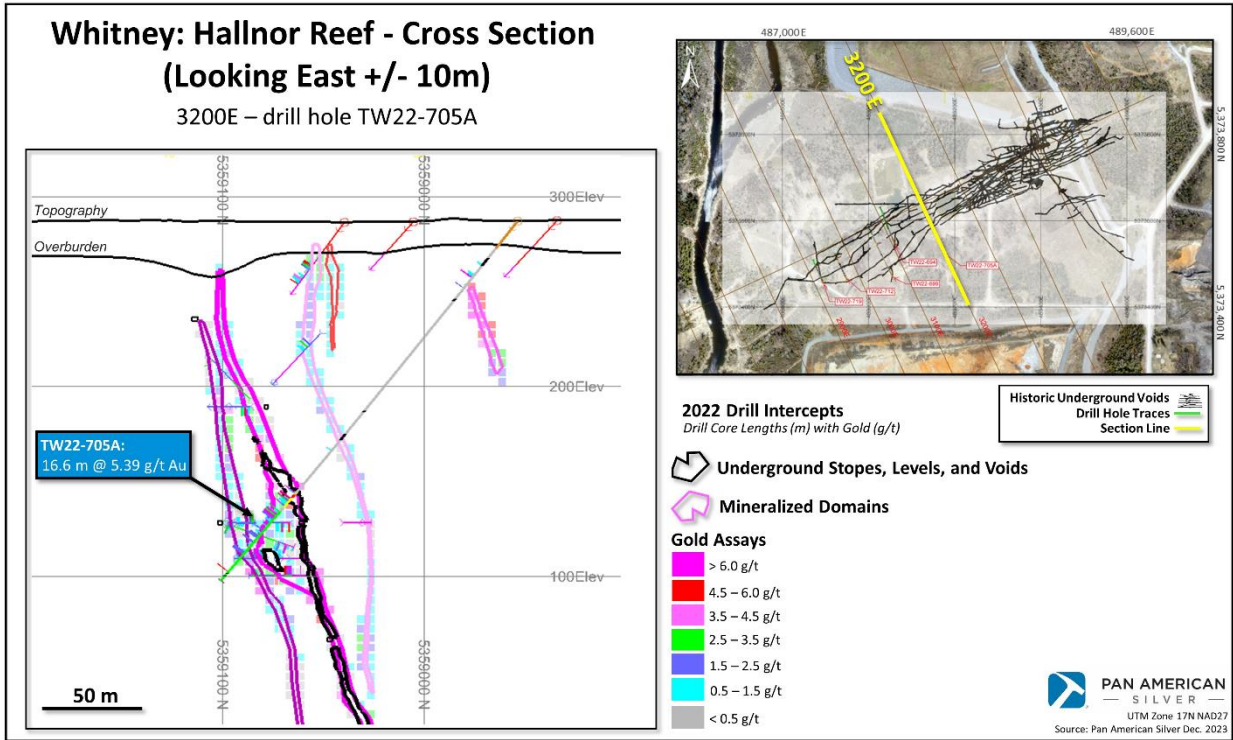


Figure 5. Timmins – Whitney: Hallnor X Sect 3200E

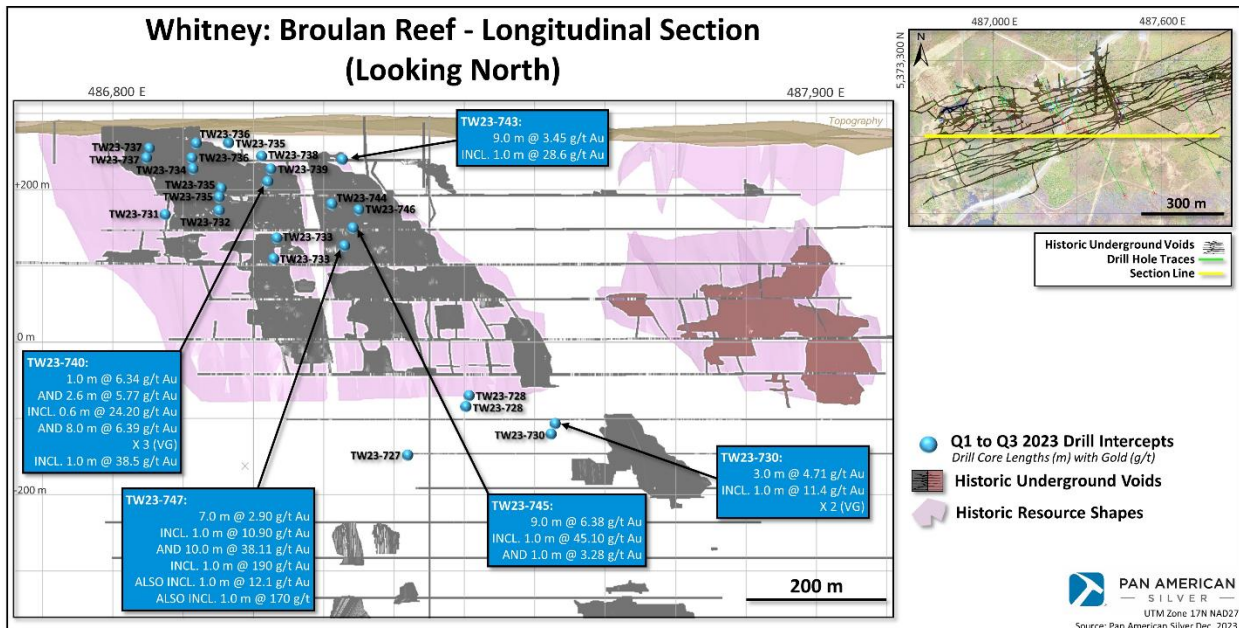


Figure 6. Timmins – Whitney: Broulan Reef Long Sect